

Internet of Things (IoT) based Polyhouse Monitoring and Controlling

Miss. Shraddha Warale¹ Gholap Rohit Ramesh² Malwade Akash Gorakshnath³

Shinde Nitin Pradeep⁴

¹Assistant Professor

^{1,2,3,4}Department of Electronic and Telecommunication Engineering

^{1,2,3,4}Shri Chhatrapati Shivaji College of Engineering Rahuri Factory 413706, India

Abstract— Agriculture plays vital role in the development of agricultural country. In India about 70% of population depends upon farming and one third of the nation's capital comes from farming. Issues concerning agriculture have been always hindering the development of the country. The only solution to this problem is smart agriculture by modernizing the current traditional methods of agriculture. Hence the project aims at making agriculture smart using automation and IoT technologies. The highlighting features of this project includes smart GPS based remote controlled robot to perform tasks like weeding, spraying, moisture sensing, bird and animal scaring, keeping vigilance, etc. Secondly it includes smart irrigation with smart control and intelligent decision making based on accurate real time field data. Thirdly, smart warehouse management which includes temperature maintenance, humidity maintenance and theft detection in the warehouse. Controlling of all these operations will be through any remote smart device or computer connected to Internet and the operations will be performed by interfacing sensors, Wi-Fi or ZigBee modules, camera and actuators with micro-controller and raspberry pi.

Keywords: Internet of Things (IoT), Sensors to Cloud System; Arduino Uno, Thing Speak

I. INTRODUCTION

In 1995, “thing to thing” was coined by BILL GATES. In 1999, IOT (Internet of Things) was come up by EPC global. IOT interconnects human to thing, thing to thing and human to human. The goal of IOT is bring out a huge network by combining different types connected devices. IOT targets three aspects Communication, automation, cost saving in a system. IOT empowers people to carry out routine activities using internet and thus saves time and cost making them more productive. IOT enables the objects to be sensed and/or controlled remotely across existing network model. IOT in environmental monitoring helps to know about the air and water quality, temperature and conditions of the soil, and also monitor the intrusion of animals in to the field. IOT can also play a significant role in precision farming to enhance the productivity of the farm.

As the world is trending into new technologies and implementations it is a necessary goal to trend up in agriculture also. Many researches are done in the field of agriculture. Most projects signify the use of wireless sensor network collect data from different sensors deployed at various nodes and send it through the wireless protocol. The collected data provide the information about the various environmental factors. Monitoring the environmental factors is not the complete solution to increase the yield of crops. There are number of other factors that decrease the productivity to a greater extent. Hence automation must be implemented in agriculture to overcome these problems. So, in order to provide solution to all such problems, it is

necessary to develop an integrated system which will take care of all factors affecting the productivity in every stage. But complete automation in agriculture is not achieved due to various issues. Though it is implemented in the research level it is not given to the farmers as a product to get benefitted from the resources. Hence this project deals about developing smart agriculture using IOT and given to the farmers.

II. IMPLEMENTATION DETAILS

A. System Block Diagram:

The basic implementation of IoT based playhouses monitoring and controlling system consist of following blocks.

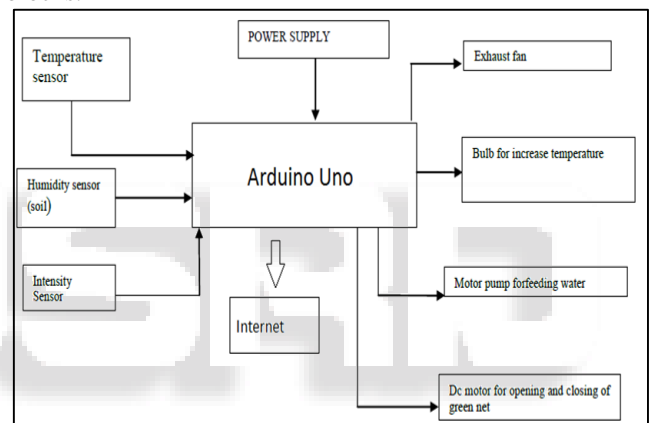


Fig. 1: System block diagram

B. Temperature Sensor LM35

The LM 35 sensor is highly used because its output voltage is linear with the Celsius scaling of temperature. It does not provide any external trimming.

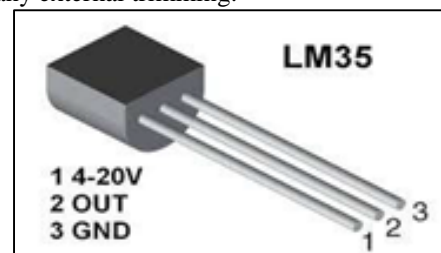


Fig. 2: Pin diagram of Temperature Sensor LM35

It has a wide operating range. The maximum output is 5V. The output will increase 10mV for every one degree rise in temperature. The range is from -55 degrees to +150 degrees. There are three terminals as Vcc, Ground and the analog sensor. It consumes minimum amount of electricity. Thus, it is energy efficient. It is very efficient in horticulture. It is user friendly to use.

C. Soil Moisture Sensor

Soil moisture sensor is a sensor which senses the moisture content of the soil. The sensor has both the analog and the

digital output. The digital output is fixed and the analog output threshold can be varied. It works on the principle of open and short circuit. The output is high or low indicated by the LED.

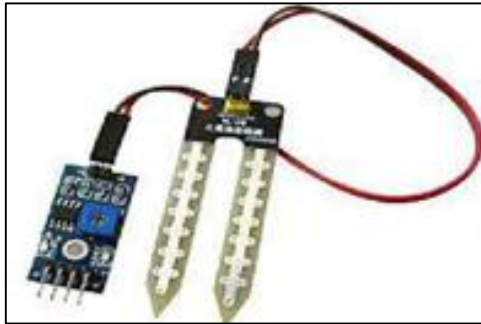


Fig. 3: Soil Moisture Sensor

When the soil is dry, the current will not pass through it and so it will act as open circuit. Hence the output is said to be maximum. When the soil is wet, the current will pass from one terminal to the other and the circuit is said to be short and the output will be zero. The sensor is platinum coated to make the efficiency high. The range of sensing is also high. It is anti-rust and so the sensor has long life which will afford the farmer at a minimum cost.

D. Humidity Sensor DHT11

In this project humidity sensor is used. Humidity is the amount of water vapor in the air. The below fig Shows humidity sensor.

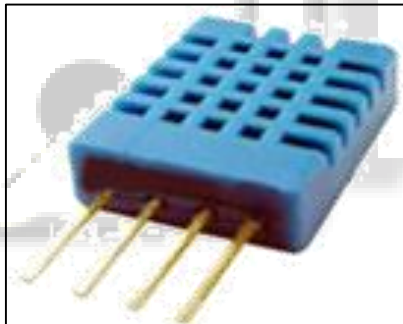


Fig. 4: Pin diagram of Humidity Sensor DHT11

DHT11 Temperature & Humidity Sensor features a temperature & humidity sensor complex with a calibrated digital signal output. By using the exclusive digital-signal-acquisition technique and temperature & humidity sensing technology, it ensures high reliability and excellent long-term stability. This sensor includes a resistive-type humidity measurement component and an NTC temperature measurement component, and connects to a high performance 8-bit microcontroller, offering excellent quality, fast response, anti-interference ability and cost-effectiveness.

Each DHT11 element is strictly calibrated in the laboratory that is extremely accurate on humidity calibration. The calibration coefficients are stored as programs in the OTP memory, which are used by the sensor's internal signal detecting process. The single-wire serial interface makes system integration quick and easy. Its small size, low power consumption and up-to-20 meter signal transmission making it the best choice for various applications, including those most demanding ones.

E. Sensor Operations:

- 1) Temperature sensor: It sense the temperature changes.
- 2) Soil sensor: It checks the soil condition. Whether is wet or dry.
- 3) Humidity sensor: It sense the humidity present in the surroundings environment
- 4) Water level sensor: It displays water levels whether water is in low or medium or in high levels.

F. Arduino Uno ATmega328 Specification

The Arduino Uno is a microcontroller board based on the ATmega328. It has 14 digital input/output pins (of which 6 can be used as PWM outputs), 6 analog inputs, a 16 MHz ceramic resonator, a USB connection, a power jack, an ICSP header, and a reset button.

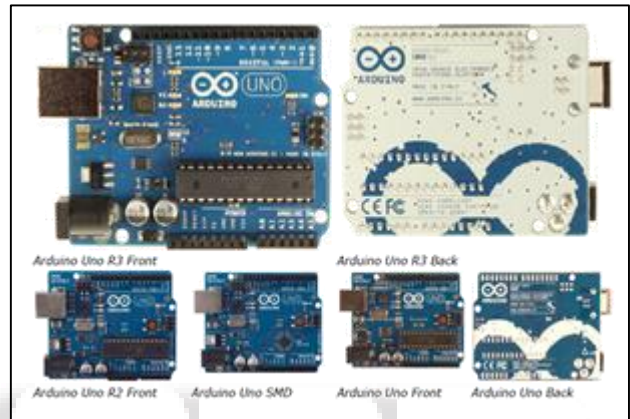


Fig. 5: Different side views of Arduino Uno

G. ATmega328 Specification:

Microcontroller	ATmega328
Operating Voltage	5V
Input Voltage (recommended)	7-12V
Input Voltage (limits)	6-20V
Digital I/O Pins	14 (of which 6 provide PWM output)
Analog Input Pins	6
DC Current per I/O Pin	40 mA
DC Current for 3.3V Pin	50 mA
Flash Memory	32 KB (ATmega328) of which 0.5 KB used by bootloader
SRAM	2 KB (ATmega328)
EEPROM	1 KB (ATmega328)
Clock Speed	16 MHz

Table 1: Specifications of Arduino Uno

The ATmega328 has 32 KB (with 0.5 KB used for the bootloader). It also has 2 KB of SRAM and 1 KB of EEPROM (which can be read and written with the EEPROM library). The Arduino Uno has a number of facilities for communicating with a computer, another Arduino, or other microcontrollers. The ATmega328 provides UART TTL (5V) serial communication, which is available on digital pins 0 (RX) and 1 (TX). An ATmega16U2 on the board channels this serial communication over USB and appears as a virtual com port to software on the computer. The '16U2 firmware

uses the standard USB COM drivers, and no external driver is needed. However, on Windows, a .inf file is required. The Arduino software includes a serial monitor which allows simple textual data to be sent to and from the Arduino board. The RX and TX LEDs on the board will flash when data is being transmitted via the USB-to-serial chip and USB connection to the computer (but not for serial communication on pins 0 and 1).

III. SOFTWARE DESIGN

A. System Flowchart:

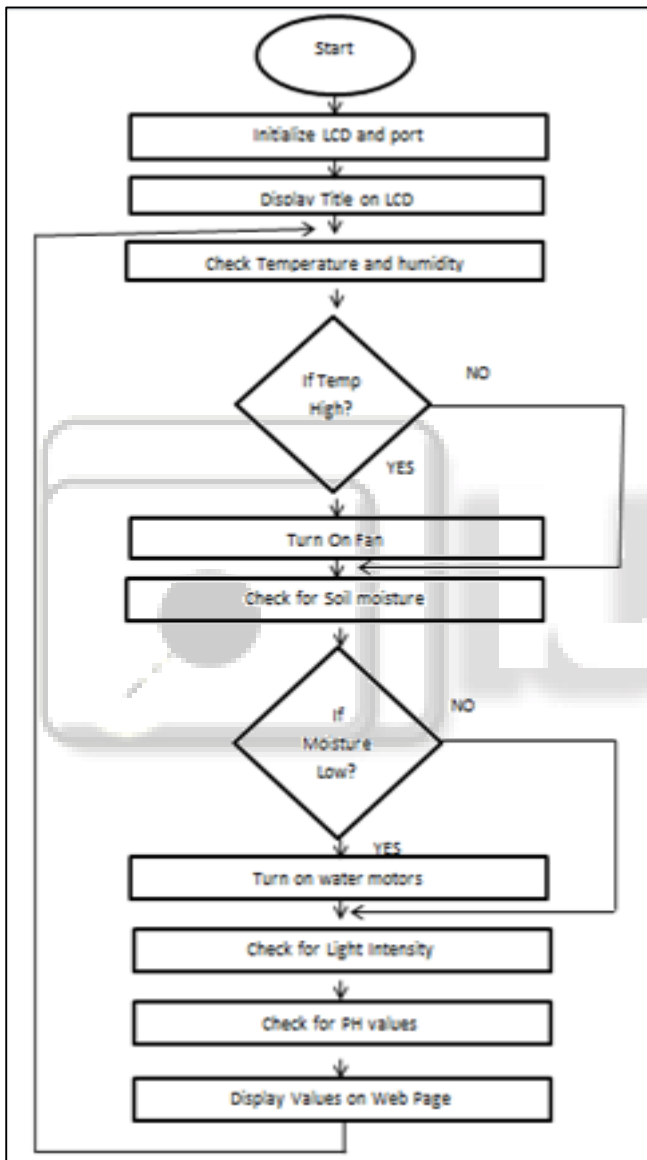


Fig. 6: Flowchart

B. System Programming Software:

The Arduino Uno can be programmed with the Arduino software. Select "Arduino Uno" from the Tools > Board menu (according to the microcontroller on your board). For details, see the reference and tutorials. The ATmega328 on the Arduino Uno comes preburned with a bootloader that allows you to upload new code to it without the use of an external hardware programmer. It communicates using the original STK500 protocol (reference, C header files).

We can also bypass the bootloader and program the microcontroller through the ICSP (In-Circuit Serial Programming) header; see these instructions for details. The ATmega16U2 (or 8U2 in the rev1 and rev2 boards) firmware source code is available. The ATmega16U2/8U2 is loaded with a DFU bootloader.

IV. CONCLUSION

Internet of Things has enabled the agriculture crop monitoring easy and efficient to enhance the productivity of the crop and hence profits for the farmer. Wireless sensor network and sensors of different types are used to collect the information of crop conditions and environmental changes and this information is transmitted through network to the farmer/devices that initiates corrective actions. Farmers are connected and aware of the conditions of the agricultural field at anytime and anywhere in the world. Some disadvantages in communication must be overcome by advancing the technology to consume less energy and also by making user interface ease of use.

ACKNOWLEDGEMENT

- We extend our sincere thanks to HOD of our Department prof. Waditake N.B.
- We also would like to thank our project guide Assistant prof. Shraddha Warale.

REFERENCES

- [1] K. Lakshmisudha, Swathi Hegde, Neha Kale, Shruti Iyer, "Smart Precision Based Agriculture Using Sensors", International Journal of Computer Applications (0975-8887), Volume 146-No.11, July 2011
- [2] Nikesh Gondchawar, Dr. R.S.Kawitkar, "IoT Based Smart Agriculture", International Journal of Advanced Research in Computer and Communication Engineering (IJARCCE), Vol.5, Issue 6, June 2016.
- [3] M.K.Gayatri, J.Jayasakthi, Dr.G.S.Anandhamala, "Providing Smart Agriculture Solutions to Farmers for Better Yielding Using IoT", IEEE International Conference on Technological Innovations in ICT for Agriculture and Rural Development (TIAR 2015).
- [4] Chetan Dwarkani M, Ganesh Ram R, Jagannathan S, R. Priyatharshini, "Smart Farming System Using Sensors for Agricultural Task Automation", IEEE International Conference on Technological Innovations in ICT for Agriculture and Rural Development (TIAR 2015).
- [5] S. R. Nandurkar, V. R. Thool, R. C. Thool, "Design and Development of Precision Agriculture System Using Wireless Sensor Network", IEEE International Conference on Automation, Control, Energy and Systems (ACES), 2014.
- [6] Joaquín Gutiérrez, Juan Francisco Villa-Medina, Alejandra Nieto-Garibay, and Miguel Ángel Porta-Gándara, "Automated Irrigation System Using a Wireless Sensor Network and GPRS Module", IEEE Transactions on Instrumentation and Measurements, 0018-9456, 2013
- [7] Dr. V. Vidya Devi, G. Meena Kumari, "Real-Time Automation and Monitoring System for Modernized

- Agriculture”, International Journal of Review and Research in Applied Sciences and Engineering (IJRRASE) Vol3 No.1. PP 7-12, 2013.
- [8] Meonghun Lee, Jeonghwan Hwang, Hyun Yoe, “Agricultural Protection System Based on IoT”, IEEE 16th International Conference on Computational Science and Engineering, 2013.
- [9] Monika Jhuria, Ashwani Kumar, Rushikesh Borse, “Image Processing for Smart Farming: Detection of Disease and Fruit Grading”, IEEE Second International Conference on Image Information Processing (ICIIP), 2013.

