

# Fuzzy Matrix Analysis of Information about the Students Attitude

A. Lakshman Kumar<sup>1</sup> K. Gurusamy<sup>2</sup>

<sup>1,2</sup>Department of Mathematics

<sup>1,2</sup>CK College of Engineering and Technology, Cuddalore, India

**Abstract**—Fuzzy matrices play an important role in the formulation and analysis of many classes of discrete structural models which are in physical, biological, medical, social and engineering sciences. The objective of this paper is to study the frequency of subject wise information gathering attitude of college students using fuzzy matrix technique.

**Key words:** Fuzzy Matrix, Students Attitude

## I. INTRODUCTION

Matrix theory was developed by W.B.Vasantha and V.Indira in the year 1998 to study the passenger transportation problem. They divided and defined four types of new matrices called Initial Raw Matrix, Average Time Dependent Data matrix (ATD), Refined Time Dependent Data matrix (RTD matrix) and Combined Effect Time Dependent Data matrix (CETD matrix) to study this problem. In the year 2003 the same technique was used by the first author to study the migrant labourers who were affected by HIV/AIDS. In 2004, W.B.Vasantha and A.Victor Devadoss used the technique to study the agriculture labourers. In 2001, S.Narayanamoorthy used this model to study the problem of silk weavers as bonded labourer and Dr.A.Kalaichelvi and S.Gnanamalar used to analyse the problems encountered by the coffee cultivators in kodai hills. Now we use the same model to study how frequently the college students are gathering information subject wise for their study.

## II. KNOWLEDGE MANAGEMENT

Matrix theory was developed by W.B.Vasantha and V.Indira in the year 1998 to study the passenger transportation problem. They divided and defined four types of new matrices called Initial Raw Matrix, Average Time Dependent Data matrix (ATD), Refined Time Dependent Data matrix (RTD matrix) and Combined Effect Time Dependent Data matrix (CETD matrix) to study this problem. In the year 2003 the same technique was used by the first author to study the migrant labourers who were affected by HIV/AIDS. In 2004, W.B.Vasantha and A.Victor Devadoss used the technique to study the agriculture labourers. In 2001, S.Narayanamoorthy used this model to study the problem of silk weavers as bonded labourer and Dr.A.Kalaichelvi and S.Gnanamalar used to analyse the problems encountered by the coffee cultivators in kodai hills. Now we use the same model to study how frequently the college students are gathering information subject wise for their study.

### A. Application of CETD Matrix

In order to study how frequently the college students are spending time for gathering subject wise information, a Linguistic questionnaire was given to them and the data was collected from both Arts and Science discipline students.

The student's information gathering attitude may be classified as:

1) Daily

2) In alternative days

3) Weekly once

4) Occasionally

The above four attributes are taken as the rows of the matrix. Based on their discipline the respondents were grouped into two categories Arts and Science students. By taking the subject wise information gathering attitude of students as rows and the respondents of the two disciplines of the students are taken as columns, a 4 initial raw matrix called Time Dependent matrix (TD) was formed.

Frequency/ Discipline	Arts students	Science students
Daily	105	183
Alternate days	39	39
Weekly once	20	22
Occasionally	21	15

Table 1

The initial raw data matrix has been converted into the Average Time Dependent matrix (ATD) ( $a_{ij}$ ) by dividing each entry with the total of the corresponding column.

Frequency/ Discipline	Arts students	Science students
Daily	.57	.71
Alternate days	.21	.15
Weekly once	.10	.08
Occasionally	.11	.06

Table 2

The average ( $\mu_j$ ) and standard deviation ( $\sigma_j$ ) of every column were worked out as follows:

Average	.2475	.2475
Standard deviation	.1910988	.26768685

Table 3

Using the average ( $\mu_j$ ), standard deviation ( $\sigma_j$ ) and a parameter  $\alpha$  from the interval  $[0,1]$ , a fuzzy matrix called the Refined Time Dependent matrix (RTD) was formed. The RTD matrix with entries  $e_{ij}$ , where  $e_{ij} \in \{-1,0,1\}$  was formed using the formula,  
 If  $a_{ij} \leq \mu_j - \alpha * \sigma_j$  then  $e_{ij} = -1$   
 else if  $a_{ij} \in \{\mu_j - \alpha * \sigma_j, \mu_j + \alpha * \sigma_j\}$  then  $e_{ij} = 1$   
 where  $a_{ij}$ 's are entries of Average Time Dependent Matrix.

By Varying the Parameter  $\sigma [0,1]$ , any of the Time Dependent Data matrices can be obtained. There of Such matrices are obtained were as follows.

RTD Matrix for  $\alpha = 0.25$

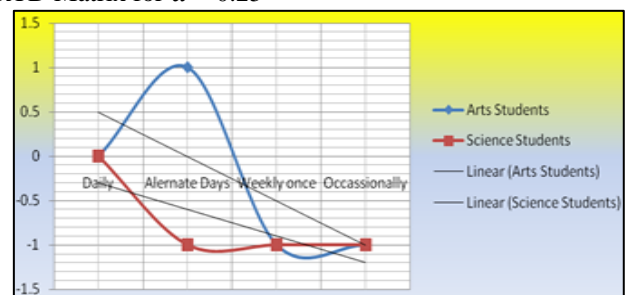


Fig. 1: Graph of RTD matrix for = 0.25

$$\begin{pmatrix} 0 & 0 \\ 1 & -1 \\ -1 & -1 \\ -1 & -1 \end{pmatrix} \quad \begin{pmatrix} 0 \\ 0 \\ -2 \\ -2 \end{pmatrix}$$

Matrix 1: Row Sum Matrix

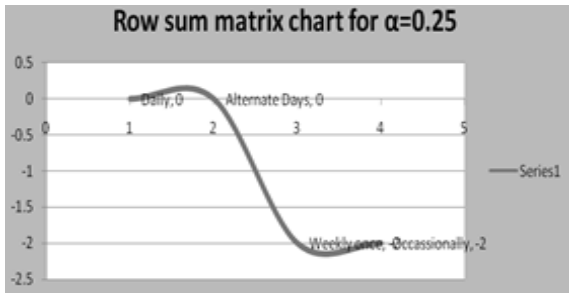


Fig. 2: RTD matrix for = 0.50

$$\begin{pmatrix} 0 & 0 \\ 1 & 1 \\ -1 & -1 \\ -1 & -1 \end{pmatrix} \quad \begin{pmatrix} 0 \\ 2 \\ -2 \\ -2 \end{pmatrix}$$

Matrix 2: Row Sum Matrix

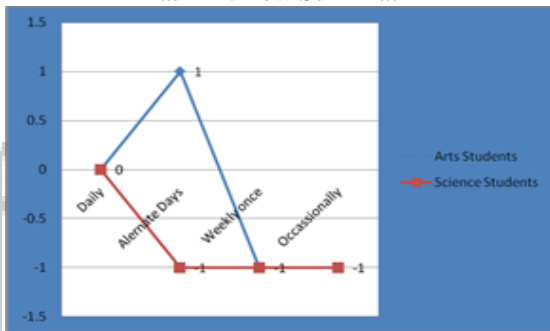


Fig. 3: Graph of RTD Matrix for = 0.50

$$\begin{pmatrix} 0 & 0 \\ 1 & 1 \\ 1 & 1 \\ 1 & 1 \end{pmatrix} \quad \begin{pmatrix} 0 \\ 2 \\ 2 \\ 2 \end{pmatrix}$$

Matrix 3: Row Sum Matrix

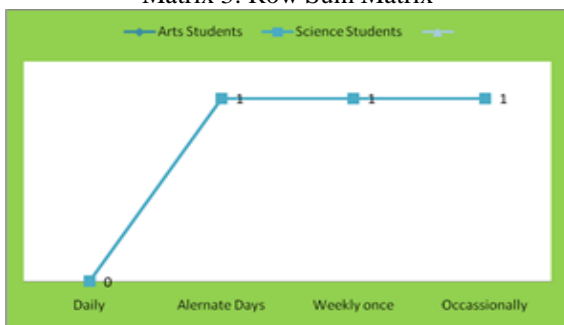


Fig. 4: Graph of RTD Matrix for = 0.75



Fig 5: Row Sum Matrix Chart For  $\alpha = 0.75$

By combining all the three matrices, the Combined effect Time Dependent Data Matrix (CETD matrix), which gives the cumulative effect of all these entries, was obtained as follows:

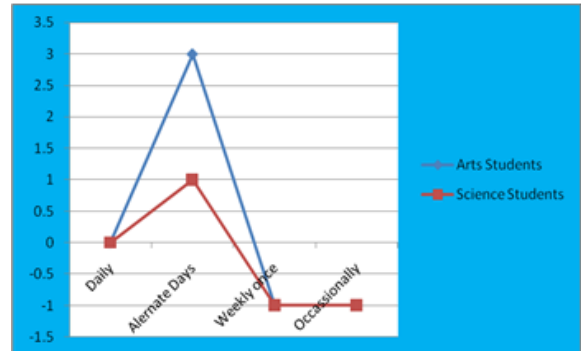


Fig. 6: Graph of CETD Matrix



Fig. 7: Combined Row Sum Matrix Chart

### III. CONCLUSION

The above discussion shows that for Arts students are spending time in alternative days for gathering information which will be useful for their study. The graph for shows that. Both disciplines of students are spending the same time for information gathering that is in alternative days only. From the graph of =0.75 also we infer that both discipline of students are collecting information in alternate days. Thus most of the students are spending time in alternative days only for gathering information subject wise for their study.

### REFERENCES

- [1] Adlassnig,K.P., "Fuzzy Set theory in medical diagnosis", IEEE Transaction on systems, (1986), Man and Cybernetics, Vol.No.16, pp.260-265.
- [2] Ahn,J.Y., Han,K.S., Oh,S.Y. and Lee,C.D.,(2011), "An Application of interval valued intuitionistic fuzzy sets for medical diagnosis of headache", International Journal of Innovative computing, Information and control, Vol.No.7, pp.2755-2762.
- [3] Bellman,R.E., and Zadeh,L.A., "Decision making in a fuzzy environment", Management Sciences, Vol.17(4), pp.141-164.
- [4] Blin,J.M.,(1974), " Fuzzy relations in group decision theory", Journal of Cybernetics, Vol.4(2), pp. 12-22.
- [5] Cagman,N and Enginoglu,S.,(2012), " Fuzzy Soft Matrix Theory and its Applications in Decision making", Iranian Journal of Fuzzy Systems Vol. 9, No.1, pp. 109-119 109.
- [6] Kalaichelvi,A.,Gnanamalar,S.,(2011),"Applications of Fuzzy Matrices in the Analysis of problems

- encountered by coffee cultivators in kodai hills", International Journal of Mathematical Sciences and Applications, Vol.No.2.
- [7] Kim,Y.H., Kim,S.K., Oh,S.Y., and Ahn,J.Y., (2007),"A Fuzzy differential diagnosis of headache", Journal of the Korean Data and Information Science Society,(2007), Vol.No. 18, pp.429-438.
- [8] Klir,K.J, and Folger,T.A., "Fuzzy sets, Uncertainty and information", Prentice Hall(1988), New Jersey.
- [9] Vasantha Kandasamy,W.B, and Indira,V.,(2008), "Applications of Fuzzy Cognitive Maps to determine the Maximum Utility of Route", Journal of Fuzzy Mathematical institute , Vol.No.8,pp.65-67.
- [10] Vasantha Kandasamy,W.B, and Florentin Smarandache and Illanthentral,K.,(2007), "Special Fuzzy Matrices for Social Scientists", Info Lean Quest Publishers, Ann Arbor.
- [11] Yong Yang and Chenli Ji.,( 2011),"Fuzzy soft matrices and their applications ", Part I, LNAI 7002, pp.618-627.
- [12] Zadeh,L.A., "Fuzzy Sets", Information and Control", (1965), Vol.No.8, pp.338-353.

