

# Inertial Pedestrian Navigation System based on Accelerometer and Gyroscope

Sai P. Ambildhok<sup>1</sup> N. B. Hulle<sup>2</sup>

<sup>1</sup>M. Tech. Student <sup>2</sup>Assistant Professor

<sup>1,2</sup>Department of Electronics & Telecommunication Engineering

<sup>1,2</sup>G. H. Raisoni Institution of Engineering and Technology, Wagholi-Pune India

**Abstract**— The navigation system provides the position and velocity of the object which plays key role in many applications. In this paper, we proposed inertial navigation system based on arduino microcontroller for the mentally retarded person in which measurements are provided by pressure sensor and MPU 6050 sensor which is a combination of accelerometers and gyroscopes. This system is fitted in the shoes of the person. The sensor gives position of the person from its starting point, distance travelled by the person. Pressure sensor measures the distance based on the footsteps. Based on the distance and direction of the person buzzer gets on indicating that person is going outside the restricted area. These data is send to server system through Zigbee module and its motion results are plotted in MATLAB.

**Key words:** Inertial Navigation, Accelerometer, Inertial Sensors, Gyroscope, Pedestrian

## I. INTRODUCTION

An inertial navigation system has wide range of applications such as submarines, guided missiles, spacecraft and aircraft. An inertial navigation system consists of a computer, inertial sensors such as accelerometers and which is a motion sensor and gyroscopes which is a rotation sensors which continuously monitors calculates the relative position, distance travelled and direction of the moving object. Generally, inertial measurement units (IMUs) consist of three orthogonal rate-gyroscopes and three orthogonal accelerometers, which measures angular velocity and linear acceleration of the moving object [1]. We get signals from these devices the signals are send to the processing unit so as to track the displacement of the object [6]. Advances in the manufacturing process of MEMS devices we can manufacture a small and light weight inertial navigation system which can be easily mounted on the vehicle in various fields of applications. These advances increased the scope of navigation systems in applications such as motion capture of humans and animals.

These navigation systems can be used for locating and tracking the position of pedestrian. This system takes care of the mentally retarded person as it avoids that person from entering into restricted area or getting lost [2]. The concept of wearable technology is used in the proposed system. Wearable technology which we can wear in our body. Wearable technology is associated with clothes, Shoes, Smart Watches, fashion and accessories that incorporate electronics equipment into it. Wearable technology is an open source research project that emerges with the web world to provide —Real time Communication (RTC).In proposed system it is associated with wearable shoes [5]. Wearable shoes consist of arduino microcontroller based navigation system. If the mentally retarded person wears this shoes persons family members can keep the track of the position of the person. It

also helps that person to avoid entry in restricted area as some type indications are given to the person such as some audio signal or buzzer gets on.

### A. Inertial System Configurations

Basically inertial navigation systems are available in two configurations which are stable platforms systems or gimballed systems and strap down inertial systems.

#### 1) Stable Platform Systems or Gimballed Systems

In stable platform systems the inertial sensors are mounted on stable platform. These sensors are mechanically isolated from external rotational motion of the vehicle. These systems are used where accurate estimation of the navigation data is required such as ships and submarines. Platform rotations are detected by gyroscope. For tracking orientation of the navigation system adjacent gimbals are read using angle pick-offs.

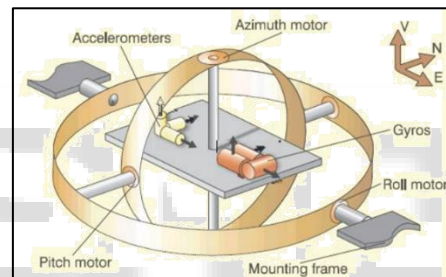


Fig. 1: Stable Platform System

### B. Strapdown Systems

In Strapdown systems, most of the mechanical circuitry is eliminated by attaching sensors directly onto the host vehicle. Rate gyroscopes are integrated for tracking the orientation of the signals. For tracking positions, the three accelerometer signals are adjusted into global coordinates based on the known orientation of the integrated gyro signals. These systems are physically smaller than the stable platform systems. In this types of INS, computational cost is decreased as most of the mechanical parts get eliminated

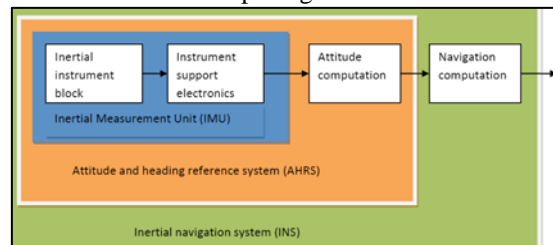


Fig. 2: Building Blocks of the strapdown INS System

This paper discusses about the inertial navigation system and its configurations in section I. Proposed System working is given in section II. Implementation components details and flow are given in section III. Results of the system are given in section IV. Applications of the system are given in section V. Conclusion of the work is given in section VI.

## II. PROPOSED WORK

### A. Block Diagram of Proposed Scheme

Proposed system block diagram is shown in figure 4 and 5. It consists of arduino microcontroller, Pressure sensor, MPU-6050 sensor, and Buzzer and Zigbee module. Direction is detected through MPU-6050 sensor. Pressure sensor gives the distance travelled by the person based on footsteps of the person. Distance travelled by the vehicle equals to the rotations of the vehicle. Motion data captured through pressure sensor and MPU-6050 is send to microcontroller arduino through I2C bus interfacing then it is send to server PC through Zigbee wireless communication. In PC, we plot motion results of the person based on data send from arduino. If the person is going outside the restricted area then buzzer will get on indicating that our person is going outside the restricted area.



Fig. 3: Arduino Uno Board

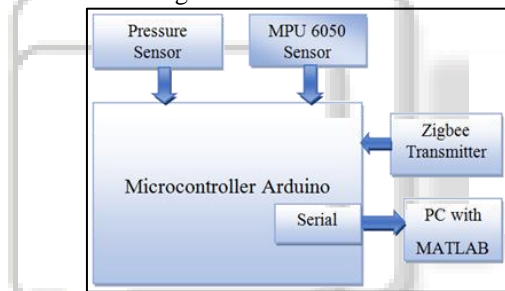


Fig. 4: Block Diagram of the transmitter Section

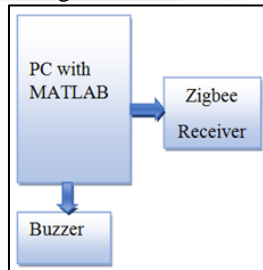


Fig. 5: Block Diagram of the receiver section

## III. IMPLEMENTATION

### A. Software Design

#### 1) Arduino Compiler

The Arduino Software (IDE) is a open source compiler in which we can write code and upload it to the board. It runs on Mac OS X, Linux and Windows. It is based on processing and other open-source software and environment is written in Java. Arduino compiler accepts C and C++ many of the libraries are written in C++.The Arduino environment performs some small transformations on the code to make sure that the code is correct then it gets passed to a compiler avr-gcc, which turns the code into machine language.

#### 2) MATLAB

MATLAB is a high-performance language its basic data element is an array that does not require dimensioning. Matrix and vector formulations allows us to solve many technical computing problems. It integrates computation with the programming visualization which gives easy-to-use environment where problems and solutions can be expressed in the mathematical notation. Areas in which MATLAB toolboxes are available include control systems, simulation, signal processing, neural wavelets, fuzzy logic, and many others.

### B. System Implementation Flow

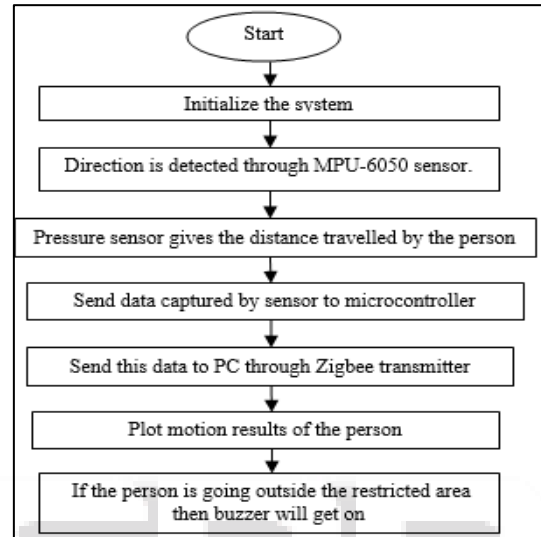


Fig. 6: Proposed System Flow

### C. Hardware Implementation

#### 1) Arduino Uno

The Arduino Uno microcontroller board is based on ATmega328P which has 14 digital input/output pins in which 6 are analog input pins, 6 can be used as PWM outputs), a USB connection, a power jack ,a 16 MHz quartz crystal, ,a reset button and an ICSP header. We can transfer data through serial communication to a computer with a USB cable. We can power it with AC-to-DC adaptor battery to get started. The microcontrollers are programmed using programming languages such as C and C++.Arduino compiler is used for the Arduino uno based project (IDE) and for processing language of the project.

#### 2) MPU-6050

The MPU-6050 devices consist of combination of two inertial sensors a 3-axis gyroscope and a 3-axis accelerometer on the same silicon die. It has onboard Digital Motion Processor™ (DMP™), which processes complete 6-axis Motion Fusion algorithms. It is provided with I<sup>2</sup>C master bus to access external magnetometers or other sensors, which allows the system to gather whole sensor data without intervention from the system processor. The dimensions of MPU6050 are 4 mm x 4 mm x 0.9 mm QFN package.

The MPU-6050 sensor has run-time calibration facility. It is provided with the calibration firmware so it avoids the costly and complex system level integration of the devices which are required for calibration procedures. Due to this, inertial navigation system gives good performance.

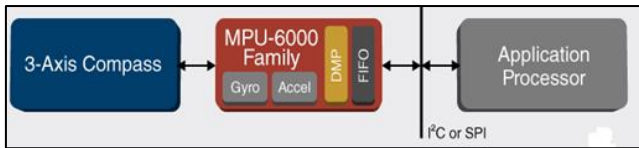


Fig. 7: MPU 6000 Family Block Diagram

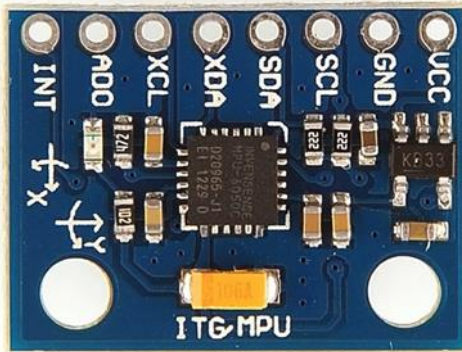


Fig. 8: MPU 6050

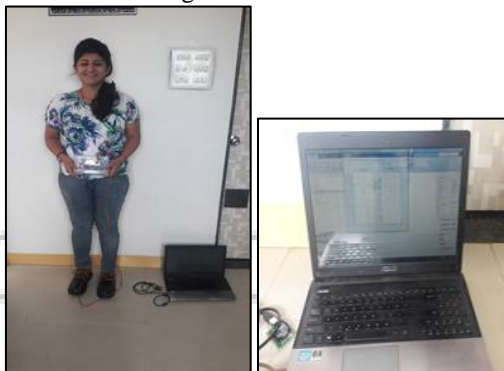


Fig. 9: Experimental Setup

#### IV. APPLICATIONS

Inertial navigation has various applications in all the fields which are given below:

##### A. Automotive Applications:

- Drive dynamics Analysis
- Analysis of test route topology
- Driver assistance systems

##### B. Aeronautics and Space Industry:

- Autopilot systems
- Helicopters
- Airplane
- Space Shuttle

##### C. Military Applications:

- ICBM, CM
- Drones (UAV)
- Torpedoes
- Jets

##### D. Maritime Systems:

- Helicopter Platforms
- Naval Navigation
- Submarines

#### V. RESULTS AND DISCUSSIONS

Figure 10 shows the graph of angle array and pressure array graph of given data. Fig 11 shows movement of the person it

is plotted in MATLAB. In which black color box is the defined restricted area and blue dotted line shows direction and distance travelled by the person. When the person goes beyond the black limiting square then buzzer gets on.

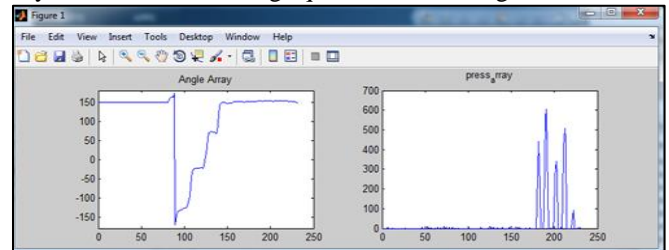


Fig. 10: Angle array and Pressure array graph of the given data.

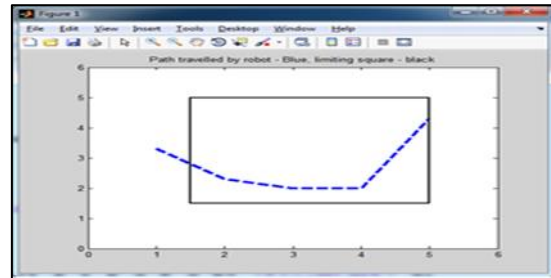


Fig. 11: Navigated path graph of the given data

#### VI. CONCLUSION

The designed inertial navigation system is implemented on arduino microcontroller and this system can be fitted on the person's body which keeps the track of the position and direction of the person in order to avoid entry of person into the restricted area. Person direction is observed through MPU 6050 sensor and distance travelled is measured through pressure sensor. This position and direction data is send to the server PC through Zigbee communication. The proposed systems continuously monitor the persons position and gives good results and it is suitable for various types of applications. The system cost is low as compare to the other navigation systems for the mentally retarded person.

#### REFERENCES

- [1] Duy Duong Pham and Young Soo Suh, "Pedestrian Navigation Using Foot-Mounted Inertial Sensor and LIDAR", Sensors Article, : 19 January 2016.
- [2] Mitja Placer, Stanislav Kovacic, "Enhancing Indoor Inertial Pedestrian Navigation Using a Shoe-Worn Marker", sensors, 13, 9836-9859, 2013.
- [3] Billur Barshan and Hugh F. Durrant-Whyte, "Inertial Navigation Systems for Mobile Robots", IEEE transactions on robotics and automation, vol. 11, no. 3, June 1995.
- [4] Dr. M. S. Zaghoul, "Accurate Positioning Using Integration of Inertial Navigation System based on GPS and Inertial Measurement Unit", International Journal of Academic Research in Computer Sciences and Electrical Engineering, September 2014, Vol. 1, No. 1.
- [5] Mohit Savner, Nitin Arun Kallole, Prof. V Ravi, "Wearable GPS Shoe for Pedestrian Inertial Navigation", IJRITCC, Volume: 4 Issue: 6, June 2016.
- [6] Marek BÍLÝ, Mushfiqul ALAM, "Development of Inertial Navigation System Using Tactical Grade Sensors", POSTER 2015, PRAGUE MAY 14.

- [7] “Inertial Navigation – Forty Years of Evolution” by A. D. KING, B.Sc., F.R.I.N., Marconi Electronic Systems Ltd.
- [8] Zengjun Liu ,Lei Wang,Kui Li,Jie Sui Zengjun, “An improved rotation scheme for dual axis rotational internal navigation system”, IEEE Sensors Journal, Volume: PP, Issue: 99
- [9] Hatem Khater<sup>1</sup> Saleh Mesbah<sup>2</sup> Amira Anwar<sup>3</sup> “Enhanced Navigation System for AUV Using Mobile Application”, International Journal of Engineering Inventions e-ISSN: 2278-7461, p-ISSN: 2319-6491 Volume 5, Issue 1 [October 2015] PP: 14-19.
- [10] Jan Koch, Carsten Hillenbrand and Karsten Berns, “Inertial Navigation for Wheeled Robots in Outdoor Terrain”, International Conference on Robots and Systems”, Japan, July 26-30, 1993.

