

# Locksmith (Daily Life Lock Tracking Application For A Smart Lock System Using GPS Technology)

Dhameliya PankajBhai RamjiBhai<sup>1</sup> Parimala R<sup>2</sup>

<sup>1</sup>Student <sup>2</sup>Professor

<sup>1,2</sup>Department of MCA

<sup>1,2</sup>The Oxford College of Engineering, Bommanhalli, Bangalore, India

**Abstract**— This application is developed in Android as a Mobile application, and in php as a web application. Locksmith application aim is to easy way to find lock braking agency at nearest place. In this locksmith application user will easily find contact information about lock breaking person or technician or agency details .this application work base on GPS system by using GPS technology people will easily find lock breaking people at nearest place, by using this type of application people will save the time as well as find the solution easy. Locksmith mainly developed in two platform one is in android application and web application from the mobile People will find using GPS system and by using web application people have to find locksmith by area pin code both way are very easy to find locksmith agency.

**Key words:** LockSmith Agency, GPS, Lock Breaking Person.

## I. INTRODUCTION

Locksmith application mainly made in two platform android for mobile and php for web application.

Android and web based locksmith application is mainly very useful for lock breaking system at that time ,Now days in many area automatic locking system available for advanced security reason, some time it will be generated problems for peoples, like some time smart lock will lock automatically by doing something wrong like car lock, office door lock, bank, atm etc. At that time people can't able to think now what we have to do, that time locksmith application very useful.

Locksmith application is a must have those people who use smart lock system in daily life like in car, homedoor, office or any place. Locksmith application completely user friendly for both android for mobile application and php for web based application. In both application people will find lockbreaking and lock repair agency at very quickly at that nearest place where ever you have ,it is very useful for those people who have locking problems.

Locksmith for mobile application basically work based on GPS technology by getting your current location or position it will be display nearest result on application so it will be easy for finder.

By using mobile android application people will find nearest lock breaking agency based on google map. In this application nearest place display first base on finder location, So in Locksmith application user no need to search anywhere just Switch on GPS and set the position based on this user will find nearest lock breaking agency at very less time. By using web based application for finding lock breaking agency user have to enter pincode/Area code of particular area wise. So it will also easy to find nearest lockbreaking agency.

Now day people time will go very fast people don't have time to wait for any particular work so now day people always chose time saving work or decision locksmith also one kind of time saving application for those people who ever use smart lock system any where like home, office or car, by using this application time consuming is less and more less person no need to wait more time and no need to search in internet.

## II. THE TOOLS USE IN LOCKSMITH

### A. Adobe Dreamweaver

Adobe Dreamweaver is use for code writing for web application using Dreamweaver writing of code is easy.

### B. Eclipse

In computer programming, Eclipse is an integrated development environment (IDE). It contains a base workspace and an extensible plug-in system for customizing the environment. Written mostly in Java, Eclipse can be used to develop applications. By means of various plug-ins, Eclipse may also be used to develop applications in other programming languages: Ada, ABAP, C, C++, COBOL, Fortran, Haskell, JavaScript, Lasso, Lua, Natural, Perl, PHP, Prolog, Python, R, Ruby (including Ruby on Rails framework), Scale, Scheme, It can also be used to develop packages for the software Mathematical. Development environments include the Eclipse Java development tools (JDT) for Java and Scale, Eclipse CDT for C/C++ and Eclipse PDT for PHP, among others.

The initial codebase originated from IBM Visual Age. The Eclipse software development kit (SDK), which includes the Java development tools, is meant for Java developers. Users can extend its abilities by installing plug-ins written for the Eclipse Platform, such as development toolkits for other programming languages, and can write and contribute their own plug-in modules<sup>[2]</sup>

## III. LANGUAGES USE IN LOCKSMITH

### A. Php

PHP is a server-side scripting language designed for web development but also used as a general-purpose programming language .As of January 2013, PHP was installed on sampled) and 2.1 million web servers. Originally created by Rasmus Lerdorf in 1994,<sup>[4]</sup> the reference implementation of PHP (powered by the Zend Engine) is now produced by The PHP Group. While PHP originally stood for Personal Home Page, it now stands for PHP: Hypertext Preprocessor.<sup>[3]</sup>

### B. Android

Android is a mobile operating system developed by Google. The Android operating system (OS) is based on the open

Linux kernel. Unlike the iPhone OS, Android is open source, meaning developers can modify and customize the OS for each phone. Therefore, different Android-based phones may have different graphical user interfaces GUIs even though they use the same OS [4].

### C. CSS

Cascading Style Sheets (CSS) is a style sheet language used for describing the look and formatting of a document written in a markup language. While most often used to change the style of web pages and user interfaces written in HTML and XHTML, the language can be applied to any kind of XML document, including plain XML, SVG and XUL. Along with HTML and JavaScript, CSS is a cornerstone technology used by most websites to create visually engaging webpages, user interfaces for web applications, and user interfaces for many mobile applications [5].

### D. PhpMyAdmin

phpMyAdmin is a free and open source tool written in PHP intended to handle the administration of MySQL with the use of a web browser. It can perform various tasks such as creating, modifying or deleting databases, tables, fields or rows; executing SQL statements; or managing users and permissions [5].

### E. SQLite

SQLite is a relational database management system contained in a C programming library. In contrast to many other database management systems, SQLite is not a client-server database engine. Rather, it is embedded into the end program.

SQLite is a popular choice as embedded database software for local/client storage in application software such as web browsers. It is arguably the most widely deployed database engine, as it is used today by several widespread browsers, operating systems, and embedded systems, among others. SQLite has bindings to many programming languages [5].

## IV. DRAWBACKS IN EXISTING SYSTEM

- in current Lock breaking system user have to search in internet ,in internet lots of result will found after getting results user have to search by particular place after getting
- this have to find contact details about particular lock braking agency after all the process only people can get solution
- it will be more and more time consuming and also difficult for not technician peoples.

## V. PROPOSED SYSTEM ADVANTAGES

Following points shows the Locksmith advantages:

- People will find perfect lock breaking location by using gps system
- Reduces/Decrease time to find lock breaking agency.
- Get fast and easy service from agency

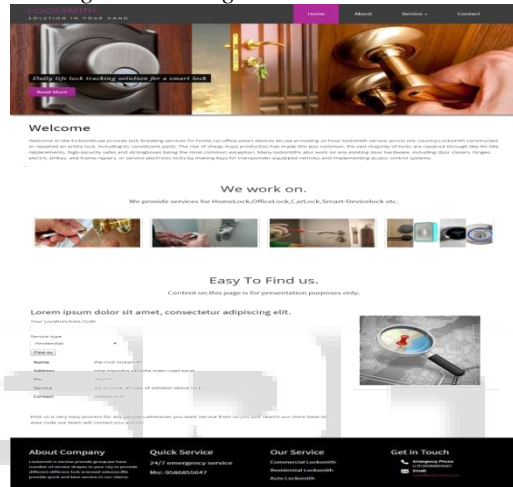
## VI. MPLEMENTATION/MODULES

In this project three modules are available:

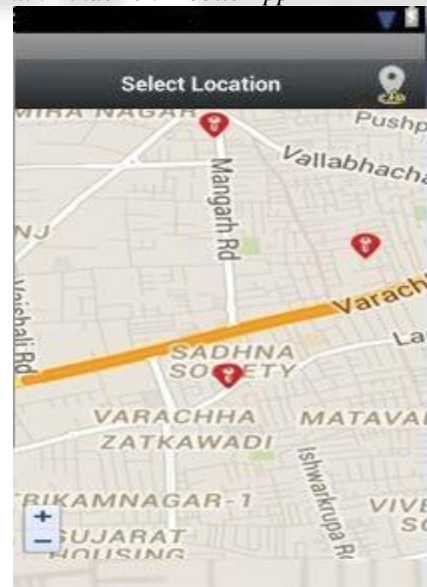
- User Module: This module generally use by user of the application in this module all the functionality will available to provide by locksmith to application user. In this module all the information available about the lock breaking agency.
- 2 Application module: This module generally use by mobile user of locksmith in this module by map user will find lock breaking agency easy way
- Administrative Module: This module maintains the information regarding the administrator and particular registered lock breaking agencies.

## VII. RESULTS

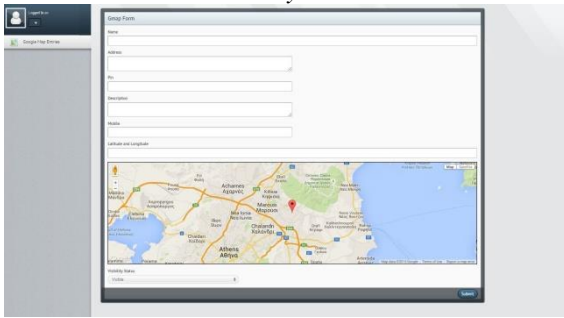
### A. Home Page/Finder Page



### B. Locksmith Finder on Mobile App

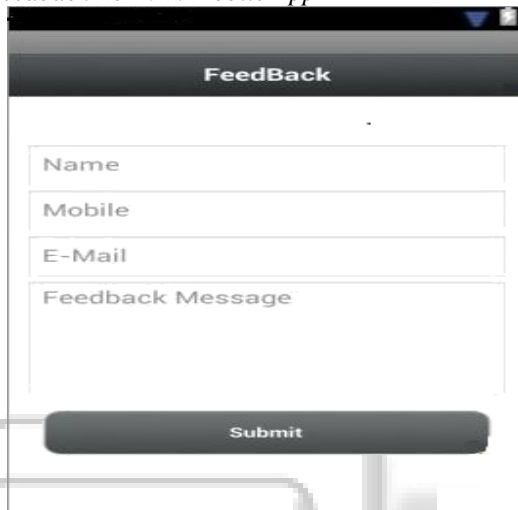


### C. Add Locksmith Location By Admin



[5] "www.w3schools.com"

### D. Feedback Form In Mobile App



## VIII. FUTURE WORK

The Develop Android Application is work slower so in future it has to be modifies or changes and increase performance. In further also develop IOS and windows based application for Locksmith. In future we try to develop more user friendly application. In future we also add facility to user profile locksmith agency will manage own profile details. and also we provide more user interface

## IX. CONCLUSIONS

Locksmith is very useful system Now day in many area automatic locking system available like in car, in office, bank, ATM etc all the lock work base on time set by authorized person ,many time people will face problem in this automatic lock technology like by mistake car will be lock automatically,ATM door ,office also lock automatically at that time locksmith application very useful, in this application all the lock breaking agency registered, new agency also register in over application ,by using this application people will easily find nearest lock breaking agency and contact that particular technician person and solve locking problem easily also user will easily know which agency working that particular time if agency currently working it display green single if agency in closing position it will display red signal. we also provide interactive interface.

## REFERENCE

- [1] "en.wikipedia.org/wiki/Adobe\_Dreamweaver"
- [2] "http://en.wikipedia.org/wiki/Eclipse"
- [3] "Steven Holzner ,PHP: The Complete Reference"
- [4] "developer.android.com"