

Investigation on Segregation of the Sucker and Exploration Mechanism on Locality Network

V.Srilakshmi¹ Mr P. Damodharan²

¹Student ²Associate Professor

^{1,2}Department of Computer Science & Engineering

^{1,2}Akshaya College of Engineering and Technology, Kinathukadavu

Abstract— The control of voyage systems has become increasingly important in many applications one important application is hauling by different mediums such as skyways, pathways, bar ways and so on. These applications usually involve queries over locality connections with dynamically unstable and multifarious trip conditions. There may be potential of user's secrecy violated when they are querying about the general required data on the private party servers where the position information about the users will be recognized. The sinful attackers may theft the position information about the client. The k nearest neighbor query verification with location points on Voronoi diagram implementation requires high cost. The Directional aware Bichromatic Reverse K-NN by assigning each item and query with a confined region is applied such that the high-priced recomputation is not required as long as the query and objects remain in their respective confined regions. The proposed system reduces the cost in client-server architectures because an object does not report its location to the server unless it leaves its confined region or the server sends a position update appeal. Lebesgue curve is used here for the capability of fully preserving the neighbouring adjacency of the original data. The user data is sheltered by applying Lebesgue transform over the distinctive values and storing the transformed values in the Lebesgue curve.

Key words: Lebesque Curve, Voronoi diagram, Lebesque Transform, Bichromatic Reverse K-NN

I. INTRODUCTION

Currently, in the fast changing world the users are extremely dependent on the geographical position based services. Spatial databases act as an storage space for storing the location information. These information on the databases get stored on the Spatial data-centres that handles the data without any ambiguity. Spatial servers owned by the some third-party people. The collection of the Spatial Data centres forms the Private Server. The negative elements of humanity with the help of the upcoming new techniques steal the locality information of the user from the server there by no privacy support for the user details. Critical problem arises due to Privacy lacking such as illegal way of handling person information, murdering a person. The Network Voronoi provides a unique beautiful solution to solve the privacy problem. Network Voronoi has an interesting structure and offers security at smallest level. To afford augmented security the proposed work applies Lebesgue Transform algorithm over the Network Voronoi as a result high level of security is provided to the details of the consumer.

The clear understanding of data mining is obtained by understanding the term data means information and the mining means extraction by combining the terms gives a well-defined understanding as data mining is a process of

extracting data in the form patterns from the huge storage repositories. SDM (Spatial Data mining) is the procedure of finding out mesmerizing and a new, probable valuable model from huge spatial data-warehouses. SDM is used to discover implicit and explicit regularities, relations between spatial facts and non-spatial facts.

The term storage is of higher importance in the field of Information Technology. Storing information is essential task to be carried out for future retrieval purpose and it also plays important role in backing data that help in effective restoring of the data in the case of failure of storage mediums. A special type of storage medium is used for locality information called as Spatial Databases. Spatial repository is defined as collection of spatial data-centres (or) spatial databases. Queries and data related to the space are stored in spatial databases. Two main special types of Tree structures such as B⁺ tree and R tree are used for spatial databases formation. Some of the practical application includes GIS (Geographical Information System), Multimedia Databases, Geo-accelerometer and many other application. Indexing process is remarkable process in spatial databases.

The technique of grouping of Cloud Computing Solution and Mobile Computing Environment brings out a classical conclusion of implementing bio network. Cloud computing offers variable properties that can easily be scaled up or down based on user demands, efficiently reducing the operational and maintenance charges for Data Proprietor. Spatial entities are stored, shared, managed and served through the bio network between the clients, intermediators and servers. A new concept called outsourcing grows faster after introduction of the cloud-computing platforms and environment. The main objective of outsourcing to reduce the human effort. Outsourcing is termed as waging to some expert for completion of the specific job. The expert in turn employs people for the completion of the job, the clear understanding of the database outsourcing is obtained by over viewing the following concept, The Data Proprietor (DP) hand over the management of self-owned databases to the Private Provider (PP), the Private Provider is in charge for cataloguing the data, responding consumer enquiries and renew the data on demand from the DP's. Moving end users (MU) use to send the queries to the DP's. The introduction of outsourcing leads the moving end user submit queries directly to the Private Provider (PP) and get back results from PP directly. For instance, Bing Maps with Atlas, a main provider of source electronic traversable maps, to supply internet mapping facility for the people community. In this case, Atlas is the DP, and Bing Maps is the access provider (PP).

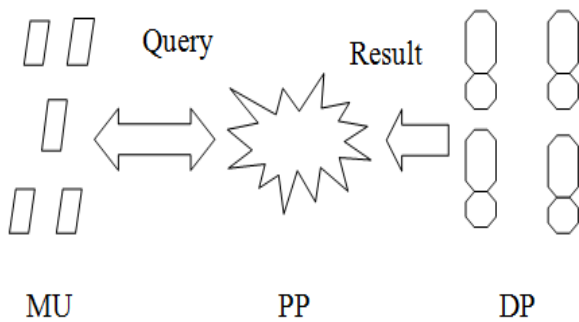


Fig. 1: Contracting Architecture

The position and spatial dimensions of geographical objects are gathered, arranged and stored in the form of a special kind of data called as Spatial Data. Spatial data is stored and expressed in different forms such as raw fact, complete information that identifies the geographic location of features and boundaries such as natural or constructed features. A practical example of natural feature is ocean, river and many more. The amount of space occupied by the geographical entities is identified and taken out from the spatial data. Generally spatial data takes two discrete and continuous data. Spatial database handles two main types of attributes: spatial and non-spatial attributes. Collection of spatial data objects that lies in single partition is termed as Continuous Spatial Data and Discrete Spatial Data is termed as collection of spatial objects from different partition planes.

The term cloud is a significant symbol representing Internet and the term computing refers to calculations and from the above statement the cloud-computing is defined as a process that performs internet storage, internet based computations. The main advantage of cloud-computing is the resources stored in the cloud can be accessed at any time period from any place the user accesses the cloud storage. Even though database outsourcing provides data proprietor with a new well-organized, inexpensive, and supple solution, it also introduces new problems. The query accuracy problem means to ensure that the query results returned by PP are still consistent. As Private Provider PP is not the real possessor of the data, it might return incorrect results to moving end-users out of its own interests, for example, an PP which hosts collection of espresso bar's might favour some that pay more commercial fees. Moreover, a PP might return suboptimal results to query clients by applying blemished or unsatisfactory algorithms in order to save assessment assets. Therefore, providing a mechanism that allows mobile end-user to confirm the exactness and totality of the query result is necessary. Specifically, exactness means all data returned by PP originate from DP without any forgery and the query result is matching to that computed by DP. Totality means all qualified results have been included by PP in the output set.

II. SURVEY ON RELATED PAPERS

A. Indexing Network Voronoi Diagrams:

The Network Voronoi diagram and its variants have been extensively used in the context of numerous applications in road networks, particularly to efficiently evaluate various spatial proximity queries such as K-NN and closest pair. Although the existing approaches successfully utilize the network Voronoi diagram as a way to partition the space for

the specific problems, there is little emphasis on how to efficiently find and access the network Voronoi cell containing a particular point or edge of the network.

On using index structures on network Voronoi diagrams that enables exact and fast response to a query in road networks. The existing index structures, treats a network Voronoi cell as a simple polygon, and yield inaccurate results due to the network topology, and fail to scale to large networks with numerous Voronoi generators. Voronoi-Quad tree is used to overcome the drawbacks of the existing method.

B. Authentication of K Nearest Neighbor Query on Road Networks:

Outsourcing spatial databases to the cloud provides an economical and flexible way for data owners to deliver spatial data to users of location-based services. However, in the database outsourcing paradigm, the third-party service provider is not always trustworthy, therefore, ensuring spatial query integrity is critical. Therefore, providing a mechanism that allows clients to authenticate the correctness and completeness of the query result is necessary.

The existing approaches cannot verify both the distance and the shortest path to the K-NN results simultaneously; the proposed uses a network Voronoi diagram-based verification approach that utilizes the network Voronoi cell of each result object to verify the correctness and completeness of the K-NN result with regard to both distance and path.

C. Spatial Query Integrity with Voronoi Neighbors:

With the popularity of location-based services and the abundant usage of smart phones and GPS-enabled devices, the necessity of outsourcing spatial data has grown rapidly over the past few years. Meanwhile, the fast arising trend of Cloud storage and Cloud computing services has provided a flexible and cost-effective platform for hosting data from businesses and individuals, further enabling many location-based applications.

Nevertheless, in this database outsourcing paradigm, the authentication of the query results at the client remains a challenging problem. The existing method focus on the OSDB model and propose an efficient scheme, called VN-Auth, which allows a client to verify the correctness and completeness of the result set.

D. Authenticated Multistep Nearest Neighbor Search:

The importance of authenticated query processing increases with the amount of information available at sources that are untrustworthy, unreliable, or simply unfamiliar. This is the first work addressing authenticated retrieval from such sources using the multi-step k-NN framework. The direct integration of optimal NN search with an authenticated data structure incurs excessive communication overhead. To overcome communication overhead C-AMN, a technique that addresses the communication-specific aspects of NN can be used and it also reduces the overhead that occurs due to transmission overhead.

E. Partially Materialized Digest Scheme:

In the outsourced database model, a data owner publishes the database through a third-party server; the server hosts the data and answers user queries on behalf of the owner.

Since the server may not be trusted, or may be compromised, users need a means to verify that answers received are both authentic and complete, that the returned data have not been tampered with, and that no qualifying results have been omitted.

A result verification approach for one dimensional query, called PMD that applies to both static and dynamic databases can be used. PMD uses separate indexes for the data and for their associated verification information, and only partially materializes the query.

F. Query Access Assurance in Outsourced Databases:

Query execution assurance is an important concept in defeating lazy servers in the database as a service model. The process of extending query execution assurance to outsourced databases with multiple data owners is highly inefficient. To cope with lazy servers in the distributed setting, the proposed QAA that focuses on I/O-bound queries is used.

The goal in QAA is to enable clients to verify that the server has honestly accessed all records that are necessary to compute the correct query answer, thus eliminating the incentives for the server to be lazy.

Technique	Advantage	Disadvantage
VQ-tree	Accurate results are obtained and handles large databases	Node reconstruction overhead.
Voronoi	Supports for securing data	Higher computation complexity
VN-Auth	Requires no change in DBMS software for supporting authentication	Focus on query retrieval by only measuring the distances
Multi-step nearest neighbor	High dimensional data	Spatial databases are not supported and no attention over security
Partially Materialized Digest Scheme	Less cost for processing	Modification of the database is needed to support authentication
Query Access Assurance	Cope with lazy server	No support for multiple data owners

Table 1: Comparison Chart

III. OVERVIEW OF THE PROJECT

The vital vision of the project is to progress the safekeeping of the user and to focus on efficient retrieval of solutions. The paper spotlight on a unique type of data mining called as spatial data mining. On the whole at the time of user surfing for a specific kind of information over the online network. The spot information of the consumer will be deposited on the private server.

For instance a lot of the private servers are not safe hence there is a option of hacking the information by the negative man. Thus information about spot of the user gets seeped out that leads to several dangerous problems such as capturing of a particular person.

Consequently there is a need to provide elevated level security to end-user .The information about users can be stored in the Network Voronoi diagram above which Lebesgue Transformation is applied to raise security to the user information.

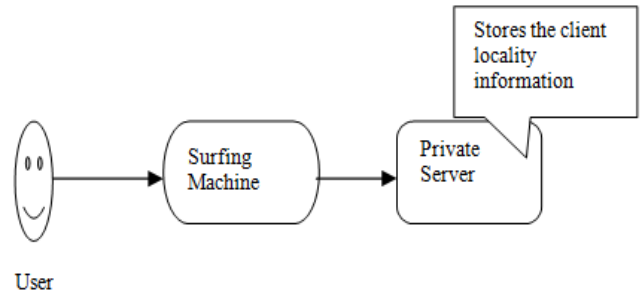


Fig. 2: Saving the locality information

In the case of Query Retrieval Process the results retrieved should be clear and complete and should not contain duplicates. The existing system uses RK-NN for query retrieval process which includes fewer deficiencies.

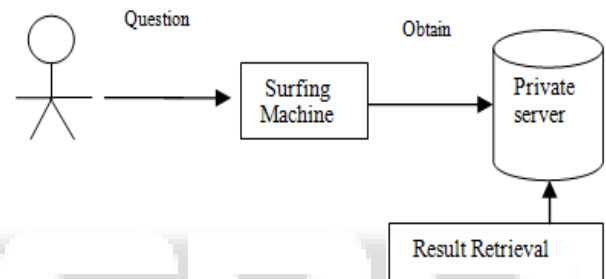


Fig. 3: Result Retrieval

There certain conditions that are needed to be satisfied by the retrieval algorithm such as correctness and completeness of the result set. Correctness refers to process that only valid results are included in the result set and completeness means to verify whether all the valid results have been included in the result set. An algorithm is said to be more powerful only if it satisfies the above conditions.

IV. PROPOSED MODEL

The research work emerges from a significant domain data mining. A specialized area in the domain is spatial data mining. The existing and proposed works revolve around the concepts of spatial data mining. The method of extracting spatial patterns from spatial repositories is termed as spatial mining. The two main goals of the project is to provide extreme privacy to the user and to get a feasible solution to input query.

The Voronoi diagram is used in the existing work focus on the area of providing security to the user. The clear understanding of the Voronoi is obtained on brief analysis of previous techniques that similar to Voronoi that are focusing on the parameter security. Generally when the user inputs the query on the search panel, the user details such as IP Address, user locality etc... Gets stored on the private server .Since the private server are those handled by some external members and those persons are not the real owner of the private server. The data stored in the private server lacks security. In certain special cases considerably low –level security is provided to the data stored in the server.

Voronoi also used represent the location information in the graphical format. The RK-NN

classification algorithm is utilized on the Voronoi diagram for retrieving the user query result. The user data may get leaked, because of less security in the Voronoi diagram. The process of Hilbert transformation is implemented to provide a solution to the problems. Despite the fact that Hilbert Hung Transform with Voronoi overcomes the security constraint, it provides only minimum- level of security and query retrieval by RK-NN classification involves deficiencies

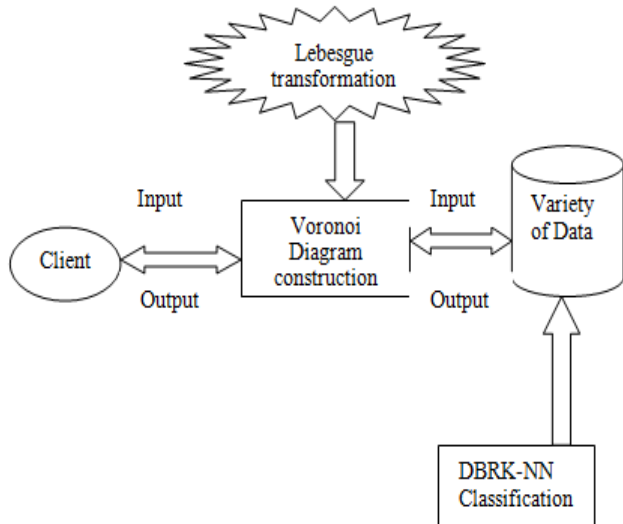


Fig. 4: Design Diagram

A. Step1: Key Invention / Submitting the Input

Primarily, the keys are produced and delivered over a set of connections. DP obtains a confidential key and an unrestricted key through a key distribution centre. The confidential key is confidential and is accessed only by DP, whereas the unrestricted key is accessible by all clients. Using its confidential key, the DP sends the data to PP which is used for query processing. The queries are gathered from the user and based on query the data processing take place on spatial networks and the queries will be then be authenticated by using the DBRK-NN classification algorithm by receiving the details from the neighbors.

B. Step2: Structure Formation of the Spatial Network

The construction of client, control machine, and the intermediate controller forms the network. The network formation is completed by means of the java platform. The client is the one who questions to the network for get-together the required information. The control machine is the one who saves and gives the information present in their storage space according to the client's demand. The control machine saves the spatial network information in the layout of Voronoi diagram. The intermediate controller is the one who collects the queries from the user and will retrieve the results for those queries from the control machine.

The below flow chart describes how results are obtained for the user query.

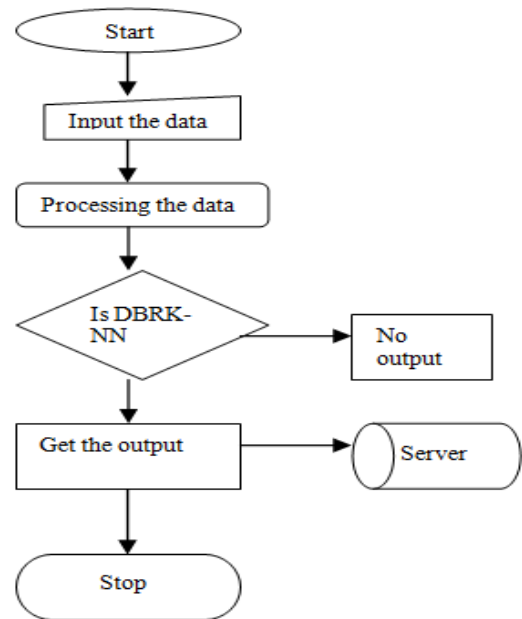


Fig. 5: Flow diagram for Query Processing

The preceding method used for stocking up the information is the MBR. The MBR represents the items in form of circular points within the rectangular margin. The objects are spatially distributed and exact location of the items within the boundary is easily identified, leads to security lacking for the object. The Voronoi diagram on comparing with MBR provides elevated security by storing the data within an asymmetrical polyhexagon structure. The exact location of the item cannot be determined due to not proper shape of the Voronoi. Consider a set of distinct objects say $L = \{l_1, l_2, \dots, l_n\}$ in a region S , the Voronoi diagram of L , denoted as $VD(L)$, partitions the space of S into u disjoint regions, such that each object l_i in L belongs to only one region and every point in that region is closer to l_i than to the other objects of L . The region around p_i is called the Voronoi polygon or Voronoi cell of l_i , denoted as $Cell(l_i)$. Therefore, the Voronoi diagram of L is union of all Voronoi cells $V \text{ Diagram}(P) = \{VC(P_1), VC(P_2), \dots, VC(P_i)\}$. Voronoi neighbors shares a common edge.

The next method that follows the security methodologies is the applying transformation over the data to be protected. The data that is needed to be protected must be stored in a digital format over which transformation is applied. As a result of Transformation a range of values will be stored so that when unauthorized person tries to access ones personal information then access will be denied. Hence a considerably minimum level of security is obtained, but it has large number of deficiencies such as redundancy, communication error etc...

C. Step3: Employing Lebesgue Transformation Over Network Voronoi Diagram

Lebesgue curve is a special type of space filling curve that is used find shortest path to reach the destination and it also identifies a set of feasible solutions. The uninterrupted research progression leads to a solution that by applying the Lebesgue curve along with transformation over the Network Voronoi diagram provides elevated confidentiality to the user, get assured that user data remains protected.

Lebesgue curve is a specialized curve that is extremely composite in the arrangement that leads to composite index calculation. Lebesgue transformation is used to store range of values in the curve over the Voronoi diagram. The transformation prevents the unauthorized user from getting the exact value. Thus the security of the user is ensured and thereby preventing the leakage of the highly protected information and in today modern environment security plays important role in different field's. Security must be ensured in every day today activities of the user. The advantage of Lebesgue is the high coherence and that proper arrangement of items there by less complexity in overall structure. Now due to less complicated structure the indexing calculations are becoming less tedious.

D. Step 4: Resultset Getting Process

The process deals with retrieval of results for an input query. The paper focus on spatial mining and it deals with getting spatial data for a spatial query. The existing system uses RK-NN (Reverse K-Nearest Neighbor) to get RK-NN spatial data results for the inputted spatial query. Since a few deficiencies in processing query such as 1) Highly Dependent on Training data 2) Includes Redundant data 3) Increased Processing time 4) Low speed. The above drawback leads to inefficient query processing.

The proposed system uses DBRK-NN (Directional aware Bichromatic Reverse K-Nearest Neighbor) technique for retrieving spatial results for the given spatial query. The directional K-NN (DBRK-NN) take search to the next level and produces accurate results. The proposed algorithm over comes the drawback of the K-NN. The advantages of RK-NN includes 1) Eliminates redundant data 2) Less processing time 3) High speed 4) Less memory consumption. The proposed system provides better results when compared to the existing system in terms of high security and efficient query retrieval process.

The mainly well-liked and important method for spatial temporal information is DBRK-NN. It has a wide variety of applications such as mobile advertising, mobile movement tracking and many other mobile applications.

It returns a set of results, each of which has as one of its k-nearest neighbours and a direction towards within a predefined distance, while the refinement step removes forged hits from the set of results. It utilizes a special type of data structure named as grid based index to invoke the spatially clustered items. and uses B+ tree for directional angles.

The refinement process is performed in specific directions there by reduces the overall comparison complexity. Instead of comparing the entire databases only a specific part of databases gets scanned which eliminates two main complexity time and memory and saves the energy resources too. Thus when comparing to the existing techniques the DBRK-NN proves to be the best out of the query retrieval process

The valid direction angle range is specialised feature of the technique Directional aware Bichromatic Reverse K- Nearest Neighbor. It accurately estimates whether a identified direction is a valid direction or not. In case of wrong direction it will display an error message showing that invalid input. If the input is correct then it continues search in the specific direction.

The below flow chart describes about the security of the user the data gets protected when stored over the Hilbert transform with Network Voronoi on the Server.

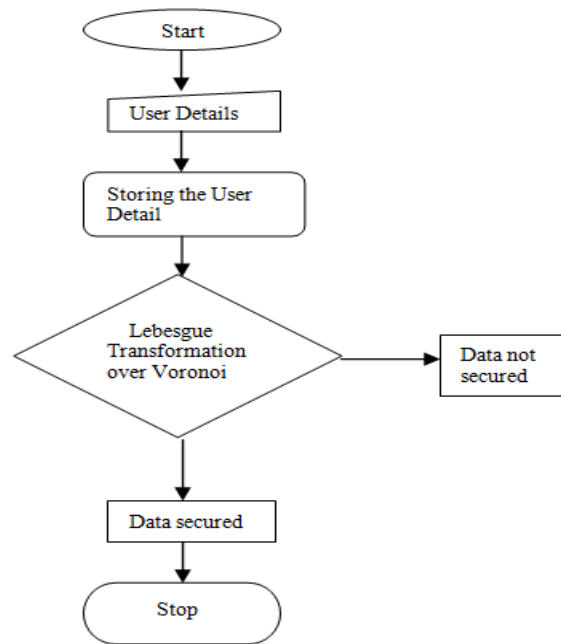


Fig. 5: Flow diagram for Data Security

V. CONCLUSION AND FUTURE SCOPE

In existing work, the query verification problem for k-nearest-neighbor enquires on spatial networks in cloud environment is implemented. While existing approaches proposed in this domain cannot make sure both the distance and the shortest path to the RK-NN results concurrently, a network Voronoi diagram-based verification approach that utilizes the network Voronoi cell of each result object to verify the correctness and completeness of the K-NN result is implemented with regard to both distance and path. To retrieve the better results than the K-NN classification algorithm, the DBRK-NN classification algorithm is implemented in the work. The user privacy is also guaranteed by introducing the method called Lebesgue transformation in which the user's exact location information will be hidden from the hackers by transforming it to some other format. The performance evaluation conducted proves that the proposed method assures better result in terms of confidentiality level, time period evaluation, memory space requirement calculation and Voronoi cell size estimation than the existing work

In the future focused on implementing the experiment as an real time android application .By implementing as an android application it will be more useful for mobility users around the world.

VI. ACKNOWLEDGEMENT

The success of a work depends on the team and its cooperation. I take this opportunity to express my gratitude and sincere thanks to everyone who helped me in my project. First and foremost, I would like to thank the Management for the Excellent Infrastructure, facilities and the constant support provided for the successful completion of the project work.

I thank Associate Professor MrP.Dhamodharan M.E., (Ph.D), Head of the Department, Computer Science and Engineering, for his valuable guidance, continuous support and suggestions to improve the quality of the project work. I express my special thanks to my guide, Associate Professor, MrP.Dhamodharan M.E., (Ph.D) for his valuable guidance, insightful comments and continuous support to carry out the project work.

I express my deep sense of gratitude to all the Faculty members and supporting staff for their continuous support in completing this project work successfully. My sincere thanks to my family members and friends for their support and motivation to carry out this project successfully.

REFERENCES

- [1] Cyrus Shahabi, Ling Hu, Wei-Shinn Ku, YinanJing, "Authentication of k Nearest Neighbor Query on Road Networks," IEEE VOL. 26, NO. 6, JUNE 2014
- [2] U. Demiryurek and C. Shahabi, "Indexing network Voronoi diagrams," in Proc. 17th Int. Conf. DASFAA, Bussan, South Korea, 2012, pp. 526-537.
- [3] M.Erwing, "The graph Voronoi diagram with applications," Network vol. 36, no. 3, pp. 156-163, Oct.2012.
- [4] Franceso Bonchi, George Kollios, Aristides Gionis, Michalis Potamias, "K-Nearest Neighbors in Uncertain Graphs, J.Comput.Secur" vol. 16, 2012.
- [5] Haixun Wang, LinLiu, Bolin Ding, Ruoming Jin, "Distance-Constraint Reachability Computation in Uncertain Graphs," vol. 17, no. 1, pp. 50-92, 2011
- [6] P. Karras, D. Pappadias, S. Papadopoulos, L. Wang, Y. Yang, "Authenticated Multi step Nearest Neighbor Search," IEEE Trans. Knowl. Data Eng., vol 23, no. 5, pp. 641-654, May 2011.
- [7] Kollios ,S. Papadopoulos, D. Pappadias, Y. Yang , " Spatial out sourcing for location based services," in Proc. IEEE 24th ICDE, Cancun, Mexico 2009,pp.1082 -1091 .
- [8] K.C.K. Lee, W.C. Lee, B. Zheng, Y. Tian, "ROAD: A new spatial objectsearch framework for road network," IEEE Trans. Knowl, Data Eng., vol. 24, no.3, pp.547-560, Mar 2012.
- [9] C.E. Leiserson, T. H. Cormen, R..L. Rivest and C.Stein, "Introduction to algorithms", Cambridge, MA, USA: MIT PRESS, 2009.
- [10]K. Mouratidis, D. Sacharidis and H. Pang, "Partially Materialised Digest Scheme: An efficient verification method for outsourced databases," VLDBJ.,vol. 18, no. 1, pp.363-381, 2009
- [11]Pang and K. L. Don, "Authenticating query results in Edge computing," in Proc ICDE Washington 2010.
- [12]C.Shahabi, S.Bakiras, L.Hu, W.S. Ku, "Spatial Query Integrity with Voronoi Neighbors," IEEE Trans. Knowl. Data Eng.,vol. 25, no. 4, pp. 863-876, Apr.2013.
- [13]R..Sion, "Query execution assurance for outsourced databases," in Proc.31stINT. Conf. VLDB, Trondheim, Norway, 2009, pp.601-612
- [14]K.L. Tan and W. Cheng, "Query assurance verification for outsourced multidimensional databases," J. Comput. Secure. vol. 17, no. 1, pp. 101-126, 2009.