

Smart Community Health Monitoring & Early Warning System

Preeti¹ Sagarika² Chaitra³ Prof. Veeramma⁴

^{1,2,3,4}Department Of Computer Science and Engineering
^{1,2,3,4}Sharanbasav University, Kalaburagi, Karnataka, India

Abstract — The advancement of smart healthcare technologies has significantly improved healthcare accessibility, patient monitoring, and emergency response systems. This paper presents a Smart Community Health Monitoring & Early Warning System designed to provide real-time health monitoring, early disease detection, and healthcare management through digital technologies. The proposed system integrates healthcare monitoring modules, patient management systems, alert generation mechanisms, and centralized healthcare databases to enhance healthcare services within communities. The system aims to reduce healthcare response time, improve patient monitoring efficiency, and support healthcare professionals with real-time patient information. The proposed platform also enables early warning notifications during abnormal health conditions, allowing timely medical intervention. Experimental analysis demonstrates that the system improves healthcare management, enhances monitoring accuracy, and provides reliable performance for smart healthcare applications.

Keywords: Smart Healthcare, Health Monitoring System, Early Warning System, IoT, Digital Healthcare, Community Healthcare, Patient Monitoring, Healthcare Automation

I. INTRODUCTION

Healthcare monitoring has become one of the most important applications of modern digital technologies. Traditional healthcare systems often suffer from delayed diagnosis, lack of continuous monitoring, poor accessibility, and inefficient communication between patients and healthcare providers. With the increasing population and healthcare demands, there is a growing need for intelligent healthcare systems that can monitor patient conditions continuously and provide early warnings during emergencies.

The Smart Community Health Monitoring & Early Warning System is developed to address these challenges through an integrated digital healthcare platform. The system provides real-time patient monitoring, health record management, emergency alert generation, and healthcare communication support. The platform allows healthcare professionals to access patient information remotely and monitor health parameters efficiently.

The proposed system enhances healthcare delivery by integrating digital technologies, smart monitoring techniques, and centralized data management. The implementation of such systems can significantly improve healthcare accessibility, reduce manual workload, and support preventive healthcare strategies.

Conventional physical and chemical treatment methods for industrial wastewater are often associated with high operational cost and secondary sludge generation. Biological treatment methods, particularly anaerobic digestion, have gained considerable attention due to their ability to treat high-strength wastewater efficiently while producing methane-rich biogas as a renewable energy source.

Anaerobic digestion is a microbial process carried out in the absence of oxygen, where complex organic matter is converted into methane, carbon dioxide, and stabilized sludge through hydrolysis, acidogenesis, acetogenesis, and methanogenesis stages. The process offers several advantages including low energy requirement, reduced sludge production, high organic matter removal efficiency, and renewable energy recovery.

The present study focuses on the treatment of dairy wastewater, distillery wastewater, and blended wastewater using anaerobic digestion process under different organic loading rates. The reactor performance was evaluated based on COD reduction, BOD removal, solids reduction, pH variation, and biogas production to determine the suitability of anaerobic digestion for sustainable industrial wastewater management.

II. LITERATURE REVIEW

Several researchers have proposed smart healthcare monitoring systems using IoT and web-based technologies for improving healthcare services.

A smart healthcare application integrating telemedicine, online doctor consultation, ambulance booking, and medicine management was proposed to simplify healthcare accessibility during pandemic situations. The system demonstrated improved healthcare integration and patient convenience.

IoT-based healthcare monitoring systems have been developed for real-time monitoring of health parameters such as heart rate, temperature, ECG, and oxygen levels. These systems provide continuous patient monitoring and emergency alert generation using cloud-based communication technologies.

Real-time patient monitoring platforms using ReactJS, NodeJS, MongoDB, and Raspberry Pi have demonstrated effective healthcare monitoring through live dashboards and remote healthcare access. These systems improved diagnosis efficiency and remote patient care services.

Machine learning-based health prediction systems have also been introduced for disease prediction and intelligent healthcare analysis using symptom-based prediction models and healthcare datasets.

The proposed Smart Community Health Monitoring & Early Warning System combines healthcare monitoring, emergency alert mechanisms, centralized data management, and digital healthcare communication into a unified platform.

III. EXISTING SYSTEM

Traditional healthcare systems mainly rely on manual patient monitoring and hospital visits. Existing systems suffer from several limitations such as:

- Lack of real-time monitoring
- Delayed emergency response
- Poor accessibility to healthcare information

- Manual data management
- Limited remote healthcare support
- Increased healthcare workload

These limitations reduce the overall efficiency of healthcare services and delay medical intervention during emergencies.

IV. PROPOSED SYSTEM

The proposed Smart Community Health Monitoring & Early Warning System provides an integrated digital healthcare solution with real-time monitoring and emergency alert capabilities.

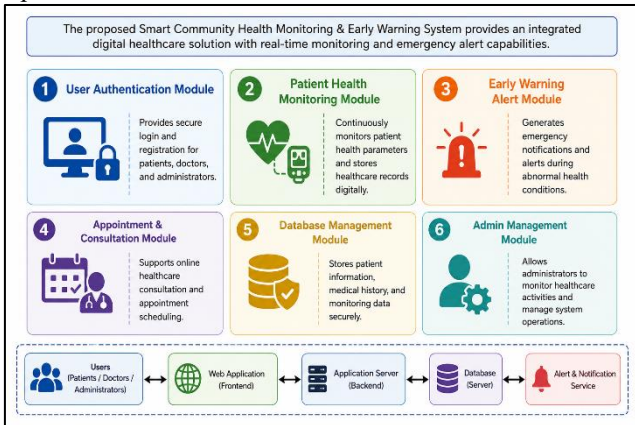


Fig. 1: Shows The Proposed system

Main Modules of the System

- 1) *User Authentication Module*
Provides secure login and registration for patients, doctors, and administrators.
- 2) *Patient Health Monitoring Module*
Continuously monitors patient health parameters and stores healthcare records digitally.
- 3) *Early Warning Alert Module*
Generates emergency notifications and alerts during abnormal health conditions.
- 4) *Appointment & Consultation Module*
Supports online healthcare consultation and appointment scheduling.
- 5) *Database Management Module*
Stores patient information, medical history, and monitoring data securely.
- 6) *Admin Management Module*
Allows administrators to monitor healthcare activities and manage system operations.

V. SYSTEM ARCHITECTURE

The system architecture consists of the following major components:

- User Interface Layer
- Health Monitoring Layer
- Alert Generation Module
- Backend Server
- Database Server
- Communication Module

The frontend interface interacts with users and healthcare professionals, while the backend processes healthcare data and stores information in centralized

databases. The monitoring module continuously analyzes patient health conditions and generates early warnings whenever abnormal conditions are detected.

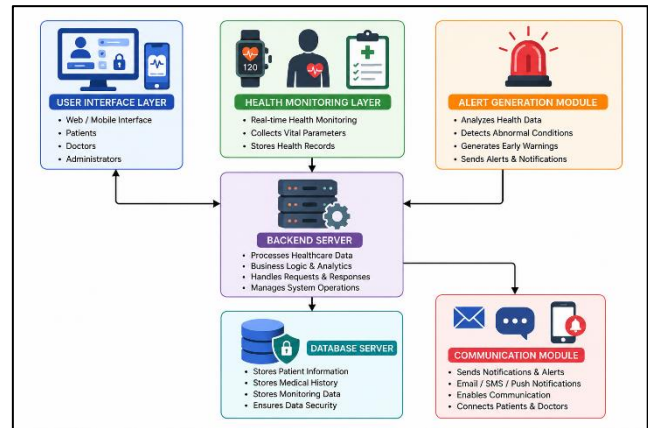


Fig. 2: Shows The System Architecture

VI. METHODOLOGY

The development methodology of the proposed system includes the following stages:

- 1) Requirement Analysis
- 2) System Design
- 3) Database Design
- 4) Frontend Development
- 5) Backend Integration
- 6) Healthcare Monitoring Integration
- 7) Testing and Validation
- 8) Deployment

The system uses modern web technologies and healthcare management principles to ensure reliability, scalability, and secure healthcare communication.

VII. IMPLEMENTATION

The Smart Community Health Monitoring & Early Warning System was implemented using the following technologies:

- HTML
- CSS
- JavaScript
- ReactJS
- NodeJS
- MongoDB / MySQL
- REST APIs

The frontend provides a user-friendly healthcare dashboard, while the backend manages healthcare data processing, monitoring operations, and emergency alert generation.

VIII. RESULTS & DISCUSSION

The proposed system was tested under different healthcare monitoring scenarios. The implementation results indicate that the system effectively supports real-time healthcare monitoring and emergency alert generation. The major outcomes of the system include:

- Improved patient monitoring accuracy
- Faster emergency response
- Enhanced healthcare communication
- Secure healthcare data management

- Reduced manual workload
 - Better accessibility to healthcare services
- The system demonstrated reliable performance and scalability for community healthcare applications.

[6] R. Sharma and P. Verma, "IoT-Based Healthcare Monitoring System," *International Journal of Engineering Research and Technology (IJERT)*, vol. 9, no. 5, pp. 112–118, 2022.

[7] R. Sharma and P. Verma, "IoT-Based Healthcare Monitoring System," *International Journal of Engineering Research and Technology (IJERT)*, vol. 9, no. 5, pp. 112–118, 2022.

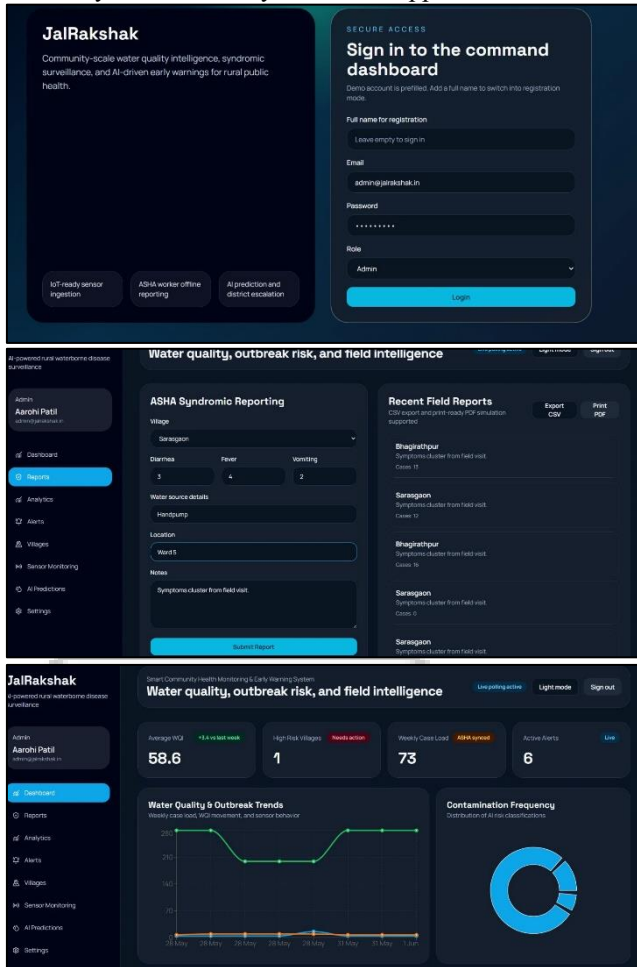


Fig. 2: Shows The Software Implementations

REFERENCES

[1] A. Sarkar, "Smart Health App for Integrated Healthcare Services," *GitHub Repository*, 2024. [Online]. Available: <https://github.com/iayansarkar/smart-health>. [Accessed: 15-Jun-2026].

[2] M. Shah, "IoT Smart Health Monitoring System," *GitHub Repository*, 2024. [Online]. Available: <https://github.com/manav5hah/IoT-Smart-Health>. [Accessed: 15-Jun-2026].

[3] S. Issuara, "Smart Health Monitoring System Using ReactJS and NodeJS," *GitHub Repository*, 2024. [Online]. Available: <https://github.com/subhashissuara/smart-health-monitoring-system>. [Accessed: 15-Jun-2026].

[4] A. Vinas, "Smart Health Prediction System Using Machine Learning," *GitHub Repository*, 2024. [Online]. Available: <https://github.com/aviavinas/smart-health-prediction>. [Accessed: 15-Jun-2026].

[5] World Health Organization, "Digital Health and Smart Healthcare Systems," *WHO Report*, Geneva, Switzerland, 2023.