

Smart Learning Portal: (SLP)

Patil Ujjaini Gajanan¹ Prof. Durgesh Bhamare²

¹Student ²Guide

^{1,2}Master Computer Applications

^{1,2}Anantrao Pawar College of Engineering & Research, Pune, Affiliated to Savitribai Phule Pune University, India

Abstract — Due to the fast-paced development of technology in the digital age, there is a need to move away from the old school system to something more advanced and interconnected using the web. This paper describes the process of designing and assessing the Smart Learning Portal (SLP) which is an interconnected digital tool aimed at improving administrative efficiency and learner engagement. Unlike other available tools that face issues such as poor data integration, poor access using mobile devices, and excessive use of paper forms, the SLP employs PHP and MySQL technologies. The project was constructed based on the Agile method, which allows for incremental development and a user-oriented approach to the solution. It incorporates such important components as RBAC, automatic assessment grading, instant performance analytics, and the fully-responsive interface created with Bootstrap. The findings prove that SLP successfully fills the existing gap between conventional education and contemporary digital needs, creating an inclusive, secure, and flexible system that can be used by any academic and corporate institution. Thus, the paper proves that through automation of administrative barriers and creation of a community in the digital environment, the Smart Learning Portal ensures the solid basis for further educational developments.

Keywords: Learning Management System (LMS), PHP/MySQL, Agile Methodology, Digital Transformation, Responsive Design, Administrative Automation

I. INTRODUCTION

The Smart Learning Platform (SLP) has become an integral part of contemporary educational infrastructures, transforming the very nature of knowledge transmission and consumption in the digital era. The integration of educational assets in one portal makes it easier for the entire learning process, starting from the creation of courses and delivery of content, up to complicated assessments and interactions, to take place more efficiently.

Such portals provide users with an opportunity to break free from the confines of conventional learning systems that depend on physical locations through providing access to learning material from virtually anywhere using different gadgets like computers, tablets, and even mobile phones.

Need for this system comes out due to the limitations faced in the traditional approach of education as well as in the fragmented approach to learning that exists in the digital environment. Traditional approaches have been using email and file sharing services which cause unorganized data and more paperwork. In addition, the SLP takes care of this problem by automating these mundane tasks, giving teachers an opportunity to concentrate on teaching.

Moreover, the platform embraces inclusiveness by eliminating the physical barriers between users, enabling all people from wherever they are in the world, and even those

who have special accessibility requirements to engage in the education process. With the advancement in technology, the SLP will continue adopting new innovative techniques like adaptive learning techniques and AI analytics.

II. LITERATURE SURVEY

The findings from the literature review on the Smart Learning Portal (SLP) indicate a paradigm shift in teaching methodologies from the static and teacher-oriented approach to the dynamic and learner-oriented virtual classroom. Past studies have shown that conventional learning technologies had limitations in terms of engagement and management of data; therefore, there is need for the integration of these systems. It is evident from past academic reviews that an effective SLP should be able to provide administrative convenience such as automated grading and registration, along with interactive capabilities like chat rooms and multimedia learning materials. Literature reviews of current platforms indicate that despite the initial success of providing access to educational materials remotely, these platforms do not have the capability to scale and adapt to mobile technology.

Recent academic studies have concentrated on the shortcomings of the old system, namely, its inability to offer a personalized path or data analysis tools. It is claimed that the contemporary SLP cannot only be regarded as an archive of PDF documents but should become an environment where different pedagogical approaches may be employed, such as social and collaborative learning. Additionally, the literature review on business and educational training highlights the lack of support in terms of disability requirements that many old SLPs fail to address.

A. Existing Medical Digital Platforms

This current system mainly uses the conventional method of teaching, where face-to-face instruction in a classroom takes place and static materials are used.

Key Features of the Current System:

- Function Separation: The delivery of content and assessment is done using two different platforms as opposed to one single system.
- Manually Driven: The key administrative tasks like grading, attendance tracking, and progress monitoring are all done manually, with the use of spreadsheets or paper workbooks.
- Time Consuming: The process of conducting these activities manually takes up considerable time from teachers' schedules.

III. PROPOSED METHODOLOGY

Methodology to be Adopted for the Smart Learning Portal (SLP): The development process for the SLP will use the Agile methodology approach with respect to designing an

interactive and efficient learning platform within a period of three months. The technical framework consists of using a strong web application stack including HTML, CSS, JavaScript, and Bootstrap for the front end to ensure the provision of responsive design for multiple platforms and the use of PHP for the back-end development process, which is used for providing security in addition to using MySQL for database management. The methodology will incorporate the use of Role Based Access Control (RBAC) for allowing students, teachers, and administrative staff access based on specific roles for enrolling students, delivering the required content, and tracking their progress. The development process is carried out using the Quality Assurance Cycle for conducting unit, integration, system, and user acceptance testing.

IV. PROPOSED SYSTEM

The Proposed System, which will be called the Smart Learning Portal (SLP), represents a holistic digital platform for the purpose of consolidating education-related resources in order to address the fragmentation inherent in conventional learning approaches. Through an integration of the administrative and educational components into a single application, the portal facilitates course management, automatic enrolment, and tracking of performance in various devices. User engagement is encouraged through innovative means, such as gamification (leaderboards and badges), collaboration (forums and virtual classrooms), and personalized learning pathways, among others. The SLP is conceived based on the principles of scalability and inclusiveness, as evident from the incorporation of adaptive learning paths and analytical dashboards that allow for customized instruction for all users. The shift from conventional methods, involving manual processes and paper documents, towards a digital approach will significantly

improve efficiency while ensuring accessibility and flexibility.

V. SYSTEM ARCHITECTURE

The backend (or server) consists of PHP ("engine"), which handles all user requests, authentication processes, and other server-side processes. My SQL is utilized for database management (CRUD operations) such as creating new data entries, updating, reading from, and deleting information. The application development environment includes Visual Studio Code and XAMPP web server.

A. Functional Modules

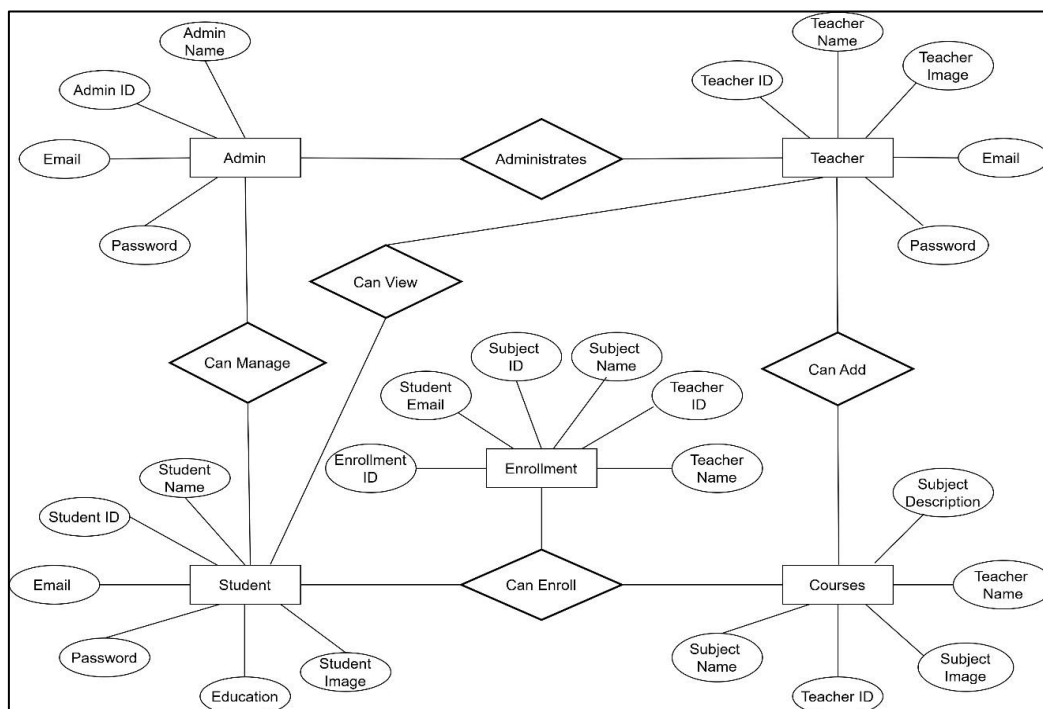
The design consists of certain functional areas, including

- Identity Management: This involves secure user registration and role-based access control (RBAC) for users to access data based on their roles.
- Content Hub: It serves as a central hub where instructors can upload video and pdf files, while students can download the same.
- Assessment Engine: It provides quiz and assignment submission capabilities that include automated scoring for objective test items.

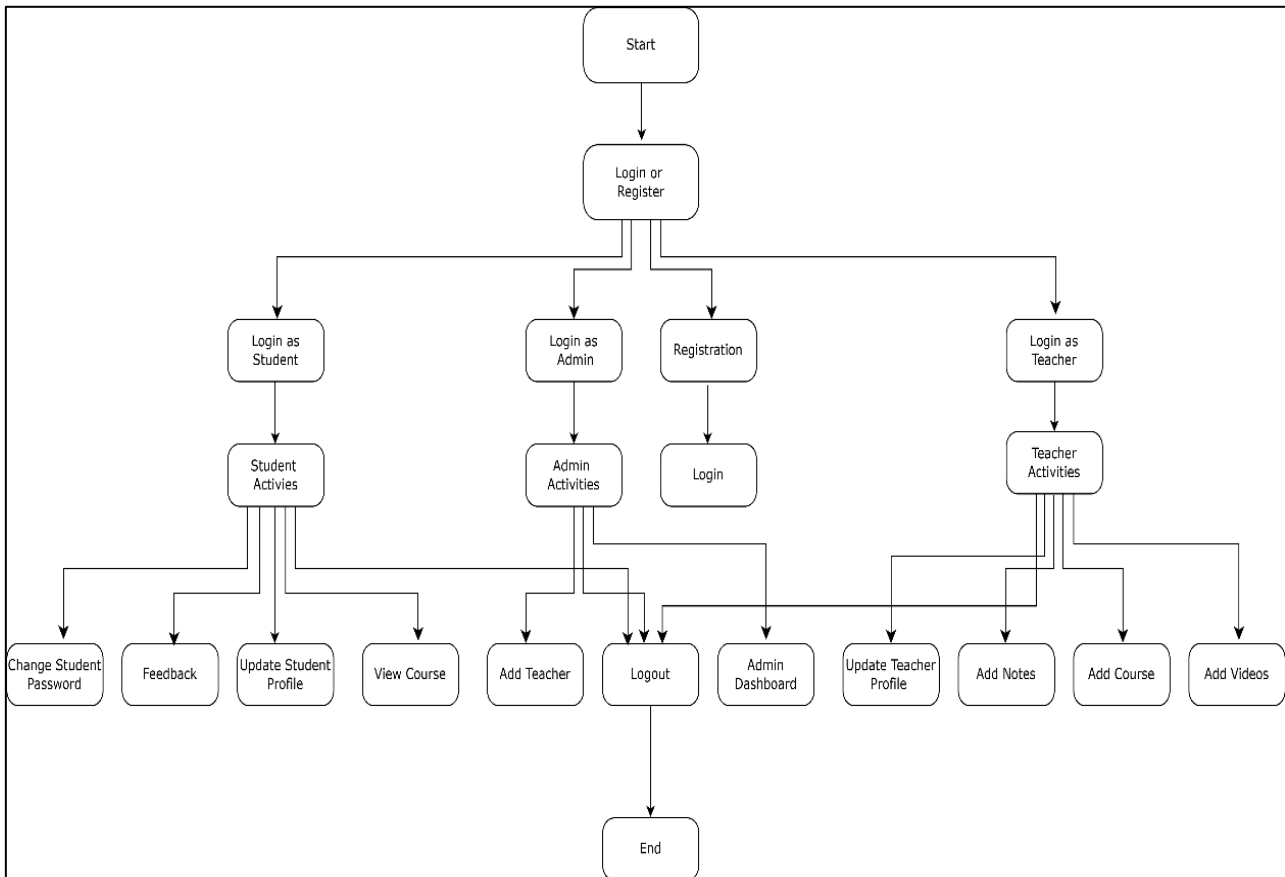
B. Non-functional Architecture Objectives The following are some non-functional objectives of the architectural design:

- Performance: The system will load pages faster (less than 3 seconds) and handle more than 100 users simultaneously.
- Security: It includes defenses against SQL injections and password hashing mechanisms for enhanced security.
- Reliability: The goal is to achieve more than 99% uptime for continuous availability of materials for students at any time of day.

VI. DIAGRAMS ERD DIAGRAM:



A. Activity Diagram:



VII. SYSTEM IMPLEMENTATION

The System Implementation of the Smart Learning Portal (SLP) follows a multi-stage process that facilitates the conversion of conceptual design into a high-performing educational platform. In order to create a good development environment, the use of the XAMPP stack is applied where an Apache web server and the MySQL database will be set up to host the project locally. During the development process, the core of the portal is developed with the help of the Visual Studio Code editor where PHP modules are coded while HTML, CSS, and Bootstrap frameworks are used for creating the portal's frontend that would be responsive on all types of devices ranging from smartphones to desktops. Security is implemented into the SLP through the password hash algorithm used in the authentication process together with Role-Based Access Control (RBAC) that limits access to particular dashboards depending on the user roles including admin, teacher, and student. The database of the SLP is created through the implementation of the ER diagram into the physical MySQL tables where PDO is used to access the data.

VIII. RESULTS

A. Functional Validity

1) Testing procedures included several iterations of Unit testing, Integration testing, and User Acceptance Testing (UAT). Each core functionality module was tested using predefined test cases to evaluate its reliability:

- 2) Authentication & Security Module – Testing demonstrated that Role-Based Access Control (RBAC) allows recognizing user types and assigning them to appropriate dashboards while protecting users' private information through password hashing.
- 3) Course Management Module – The system was successfully tested with various multimedia materials, such as HD-quality videos and large-sized PDF documents, allowing efficient uploading and indexing of files so that enrolled students can access them.
- 4) Assessment Accuracy Module – Automatic grading proved to be 100% accurate when calculating the results of objective quizzes.

IX. COLLABORATION AND FUTURE SCOPE.

Collaboration and Future Scope of the Smart Learning Portal (SLP)

The Collaboration and Future Scope of the Smart Learning Portal (SLP) highlights the nature of the portal as an evolving ecosystem that focuses on social learning and technology integration. The inclusion of elements like discussion boards, peer review sections, and instant communication makes the portal successful in overcoming the gap between distant learners and their educators by building a community of learners. In terms of the future scope of the portal, the plan is to include AI to customize the learning journey of each learner and to implement AR/VR to provide immersive instruction.

X. CONCLUSION

The Conclusion of this project is an essential summary and synthesis of all of the innovations and developments that have come about in the creation of the Smart Learning Portal (SLP). By solving the problem of disconnection between conventional educational approaches that focus on physical classes and the connected world of today, the Smart Learning Portal becomes a transformational innovation that solves this problem. The creation of an integrated ecosystem ensures that the limitations of older systems become non-existent thanks to automation.

A. Concluding Dimensions

Educational Advancements: This project showed that SLPs can be seen as much more than just a file system. It can be used for collaboration and gamified assessment, leading to increased learning efficiency. **Operational Effectiveness:** As the quantitative research showed, the transition from manual operation to an automated and integrated platform was inevitable. With enrollment time reduced by 13 minutes to only two and automated grading taking less than a second, the new approach proves itself necessary.

ACKNOWLEDGMENT

It is my great pleasure to take this opportunity to express my heartfelt appreciation to all those people without whom the completion of this project would not have been possible. Firstly, my deepest sense of gratitude goes to my project supervisor, [Name of Supervisor]. It was only because of his/her immense assistance, dedication, and technical input that the Smart Learning Portal came into existence.

I would also like to acknowledge the [Name of Department/Institution] for giving me the facilities required to conduct this research. My sincere thanks go to my fellow students and colleagues for their valuable suggestions at various points throughout the testing period. Lastly, I want to appreciate my family members who kept motivating me throughout the whole process.

REFERENCES

- [1] Al-Ajlan, A., & Zedan, H. (2018). Why Moodle? International Conference on Future Envisioning of Technology and Computer Science. The article covers the development trends within open- source LMS systems and the transition to centralized digital learning.
- [2] Anderson, T. (2024). *The Theory and Practice of Online Learning* (3rd ed.). AU Press. One of the core texts covering the change from a passive to an interactive environment of digital learning.
- [3] Codd, E. F. (1970). A Relational Model of Data for Large Shared Data Banks. *Communications of the ACM*. The source on relational database systems (MySQL) implemented in the project.
- [4] Fielding, R. T. (2000). *Architectural Styles and the Design of Network-based Software Architectures*. Doctoral dissertation, University of California, Irvine. The source for analyzing the web-based approach and the client-server interactions in the portal.
- [5] Martin, R. C. (2017). *Clean Architecture: A Craftsman's Guide to Software Structure and Design*. Prentice Hall.

The reference to be used for implementing modular design and using role-based access control (RBAC) methodology.