

HealthPulse: Your Digital Healthcare Companion

Shruti Patil¹ Riya Jha² Asmita Wakchaure³ Prof. Kumud Wasnik⁴ Prof. Poonam Vengulekar⁵

^{1,2,3,4,5}Department of Computer Science and Technology

^{1,2,3,4,5}Usha Mittal Institute of Technology, SNTD, Mumbai, India

Abstract — The rise of infectious diseases around the world emphasizes the need for cutting-edge instruments to improve early identification and prevention. An AI-powered medical chatbot that predicts infectious diseases based on user-reported symptoms and medical history is proposed in this study. Through real-time interaction and the integration of machine learning (ML) and natural language processing (NLP), the chatbot correctly detects infections and suggests the best course of action, including diagnostic testing or medical advice. The program, which was trained on a wide dataset, can efficiently identify between disorders that have similar symptoms. It creates customized health evaluations and provides prompt, situation-specific guidance. The system also helps with public health monitoring by offering anonymised data for outbreak detection and epidemiological analysis. High prediction accuracy in the experimental results indicates the potential of AI-driven solutions to enhance public health outcomes and healthcare delivery.

Keywords: AI, Medical Chatbot, Symptom Analysis, Machine Learning, NLP, Infectious Disease Prediction, and Public Health

I. INTRODUCTION

The increasing prevalence of infectious diseases worldwide has placed an immense burden on healthcare systems, leading to overcrowded hospitals, limited access to timely consultations, and delays in medical interventions. Many individuals, especially those in remote or under-resourced areas, struggle to obtain accurate, immediate, and personalized medical guidance. Traditional sources of healthcare information, such as online search engines or static medical documents, often lack the necessary context-awareness and precision, leading to potential misinterpretation of symptoms and delays in seeking appropriate care.

To address these challenges, we present HealthPulse: The Comprehensive Medical application, an AI-powered digital healthcare companion designed to revolutionize disease prediction, management, and response. HealthPulse utilizes Natural Language Processing (NLP) and Machine Learning (ML) algorithms to interact with users in real-time, assess their symptoms, and provide accurate, data-driven health recommendations. Unlike conventional healthcare tools, HealthPulse integrates patient reported symptoms, medical history, and up-to-date clinical knowledge to generate personalized health assessments. It suggests the most suitable next steps, whether it be consulting a doctor, purchasing medication, or scheduling a test. This study examines the deployment of a blockchain-based file storage system, including its structure, operation, and security advantages. To avoid single points of failure, the increasing prevalence of infectious diseases worldwide has placed an immense burden on healthcare systems, leading to overcrowded hospitals, limited access to timely consultations, and delays in medical interventions. Many individuals, especially those in remote or under-resourced

areas, struggle to obtain accurate, immediate, and personalized medical guidance. Traditional sources of healthcare information, such as online search engines or static medical documents, often lack the necessary context-awareness and precision, leading to potential misinterpretation of symptoms and delays in seeking appropriate care.

II. METHODOLOGY

The proposed system, HealthPulse: Your Digital Healthcare Companion, leverages Natural Language Processing (NLP) and Machine Learning (ML) to provide real-time health assessments, symptom analysis, and early disease prediction. The system integrates data-driven learning, contextual reasoning, and user interaction models to enhance diagnostic accuracy and improve public health monitoring.

It features an AI chatbot for 24/7 virtual assistance, integrates with wearable devices for real-time health tracking, and supports telemedicine for remote consultations. The system ensures data security with HIPAA/GDPR compliance and contributes to public health monitoring by detecting disease trends. Additionally, it promotes self-care through fitness, nutrition, and mental health guidance.

When a patient enters symptoms in textual form, the system extracts keywords and attempts to match them against a predefined dataset or medical knowledge base. However, this method often lacks contextual understanding and may result in inaccurate or incomplete diagnoses.

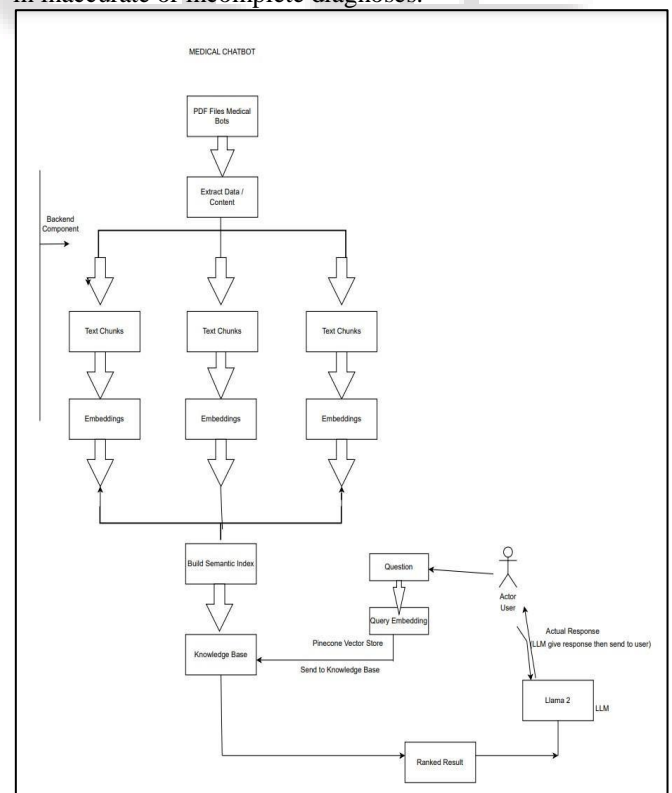


Fig. 1: system Architecture

Traditional healthcare systems rely heavily on in-person medical consultations, often leading to overburdened hospitals, delayed diagnoses, and limited healthcare access, particularly in remote areas. The existing systems present several challenges:

- Backend Processing PDF File Medical Docs → Input medical documents. Extract Data/Content → Extracts relevant text data from the PDFs.
- Text Chunking → The extracted data is divided into smaller, manageable text chunks.
- Embeddings → Each text chunk is converted into vector embeddings using NLP techniques.
- Build Semantic Index → A searchable index is created from the embedded text data.
- Query Processing (User Interaction) User asks a Question → The chatbot receives a query. Query Embedding →
- Converts the question into a vector representation.
- Search in Vector Database → Compares the query embedding with stored embeddings in the knowledge base. Ranked Results → Retrieves the most relevant responses based on similarity ranking.
- Response Generation → The best-matched result is selected and sent as the chatbot's response to the user

III. IMPLEMENTATION

The following is the framework of the Healthpulse implementation:

- 1) Frontend Development: Developed with HTML, CSS, and JavaScript, it features a simple, intuitive interface for registering, entering symptoms, and interacting with chatbots.
- 2) Backend & Chatbot Framework: Created in Python with server-side logic using frameworks such as Flask. Transformer models like BERT and BioBERT are used in Natural Language Processing (NLP) to comprehend user inquiries.
- 3) Symptom Analysis and Prediction: Makes use of machine learning models (such as CNN/LSTM, XGBoost, and Random Forest) that have been trained on medical datasets to forecast potential illnesses based on symptoms that have been recorded. Results contain recommendations based on severity and confidence scores.
- 4) Knowledge Base Integration: Sentence Transformers are used to convert research papers and medical materials into vector embeddings, which are then saved in the Pinecone vector database. Context-aware replies are made possible via real-time semantic search.
- 5) Decision Engine: Based on the severity of the user's symptoms, it decides whether the user need general guidance, diagnostic testing, or medical consultation.
- 6) Security & Privacy: Encrypts data and complies with HIPAA/GDPR to save personal information and medical history securely.
- 7) Continuous Learning & Feedback Loop: Retrains models and dynamically updates the knowledge base by incorporating epidemiological trends and user feedback.

- 8) Deployment: Capable of integrating with wearable technology and telemedicine platforms, and designed for scalability through cloud infrastructure.

IV. RESULT

- The HealthPulse medical chatbot was developed using artificial intelligence (AI) and machine learning (ML) to enhance real-time medical advice, infectious disease prediction, and patient contact. The accuracy, efficiency, and usefulness of the system were tested in order to evaluate its potential as a healthcare aid.
- The chatbot demonstrated significant accuracy in early detection and symptom separation after being trained on a wide sample of infectious diseases. NLP testing verified successful symptom extraction, however input clarity affected accuracy.
- Better Accessibility: 24/7 medical advice was available, which was particularly helpful in isolated locations. Scalability: Unlike conventional in-person systems, it was able to handle several users at once.
- HealthPulse's dynamic design and practical suggestions increased patient involvement. Voice support was suggested by users. Human supervision and improved context-aware reasoning were still needed for complex instances and multi-symptom searches.
- By preserving cryptographic hashes of file transactions and guarding against manipulation, the system guarantees data integrity.
- Requiring computational work for transaction validation strengthens security by making illegal changes impracticable.

Metric	HealthPulse	Traditional Healthcare Systems
Response Time	Instant (<2s)	Hours to Days (appointment required)
Availability	24/7 Access	Limited hours
Cost	Free/Minimal	High consultation fees

Table I:

Scalability	Can handle multiple users simultaneously	Limited by doctor availability
Accuracy	High for common diseases, improving with training	High but depends on physician experience
Human Interaction	AI-automated guidance	Requires direct Medical consultation

Table II: Analysis

The following distinctions can be seen when contrasting the suggested approach with alternative blockchain-based file storage options:

- [7] Nadarzynski, T., Miles, O., Cowie, A., Ridge, D.: Acceptability of artificial intelligence (ai)-led chatbot services in healthcare: A mixed-methods study. *Digit. Health* 5, 2055207619871808 (2019)
- [8] KC, G.P., Ranjan, S., Ankit, T., Kumar, V.: A personalized medical assistant chatbot: Medibot. *Int. J. Sci. Technol. Eng.* 5(7) (2019)
- [10] Kadu, O., Sihasane, S., Naik, S., Katariya, V., Gutte, V.S.: Intelligent healthbot for transforming healthcare. *Int. J. Trend Sci. Res. Dev. (IJTSRD)* 3(3), 1576–1579(2019)

